

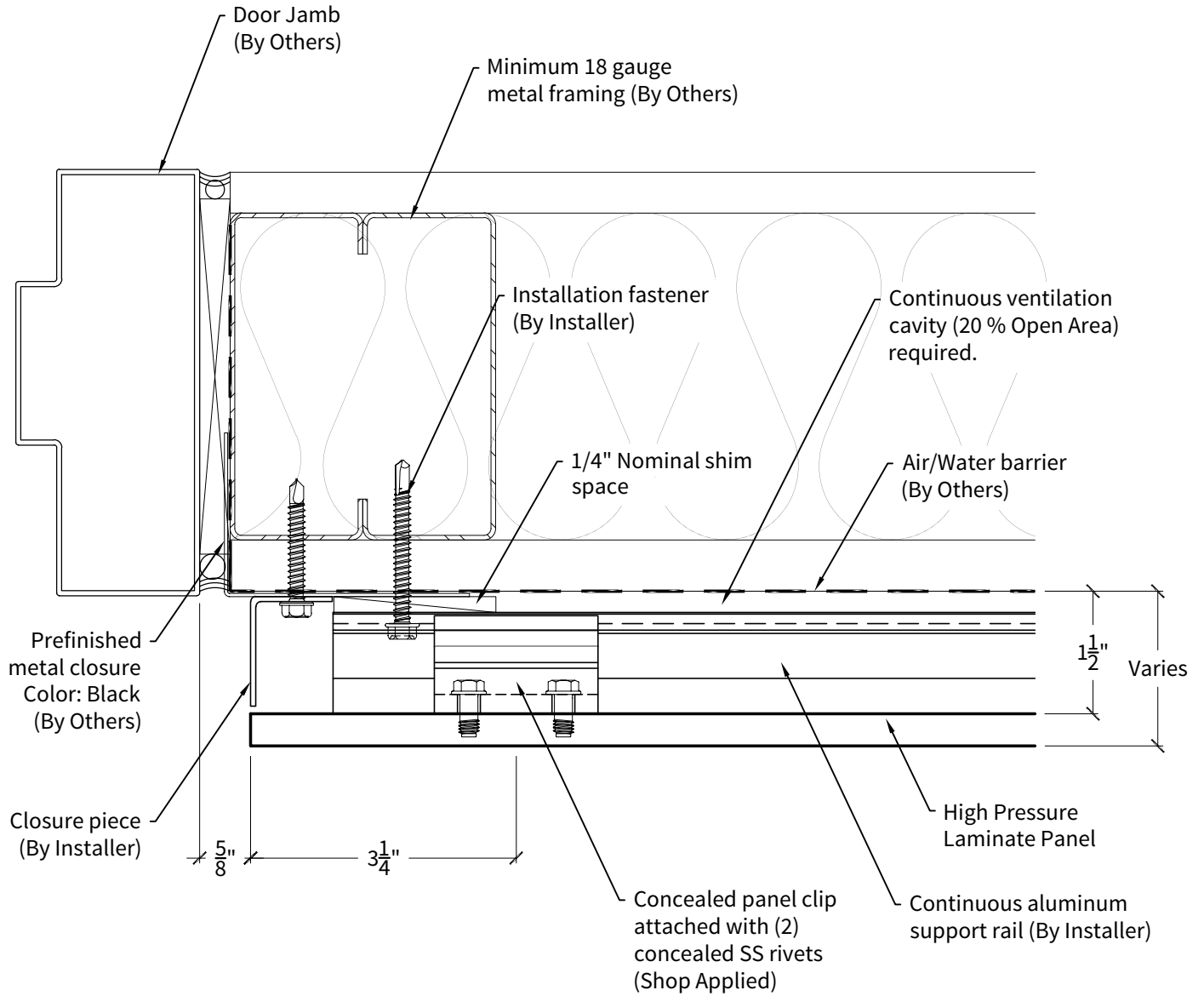
System 210
HPL Panel Concealed Rainscreen Attachment System

Standard Details

Revised 06/2016

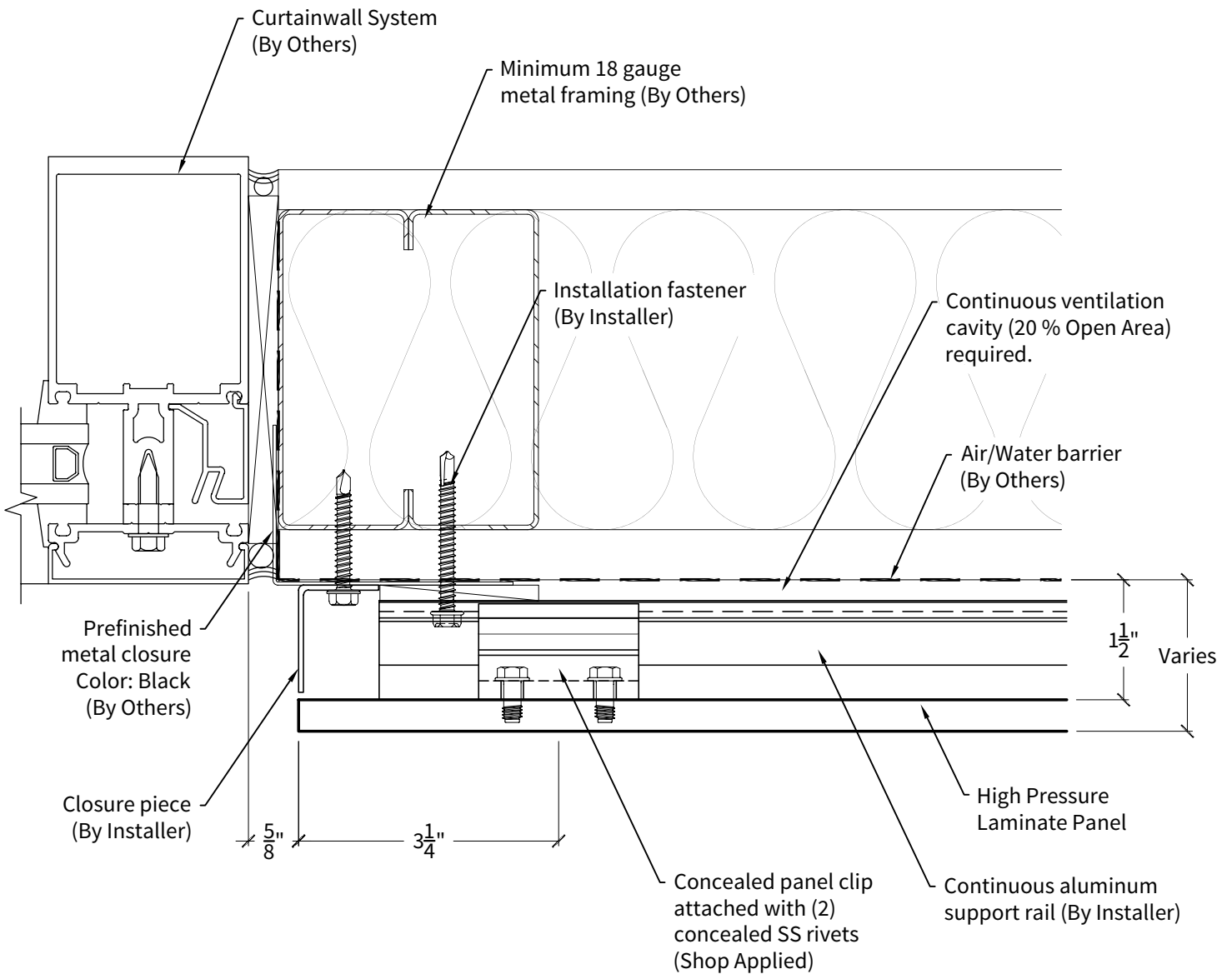
HPL RAINSCREEN - Typical termination at door jamb

1



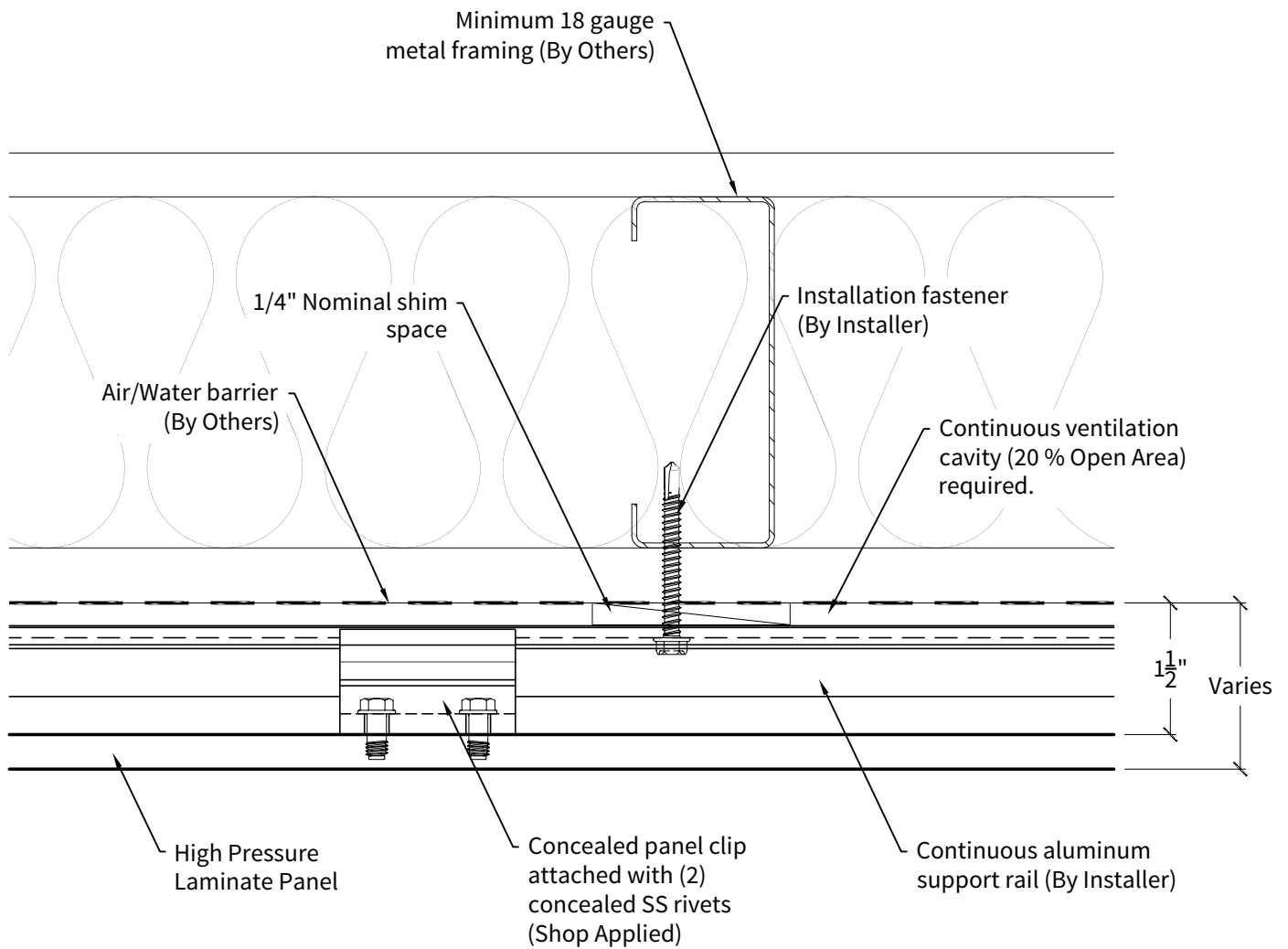
HPL RAINSCREEN - Typical termination at window jamb

2



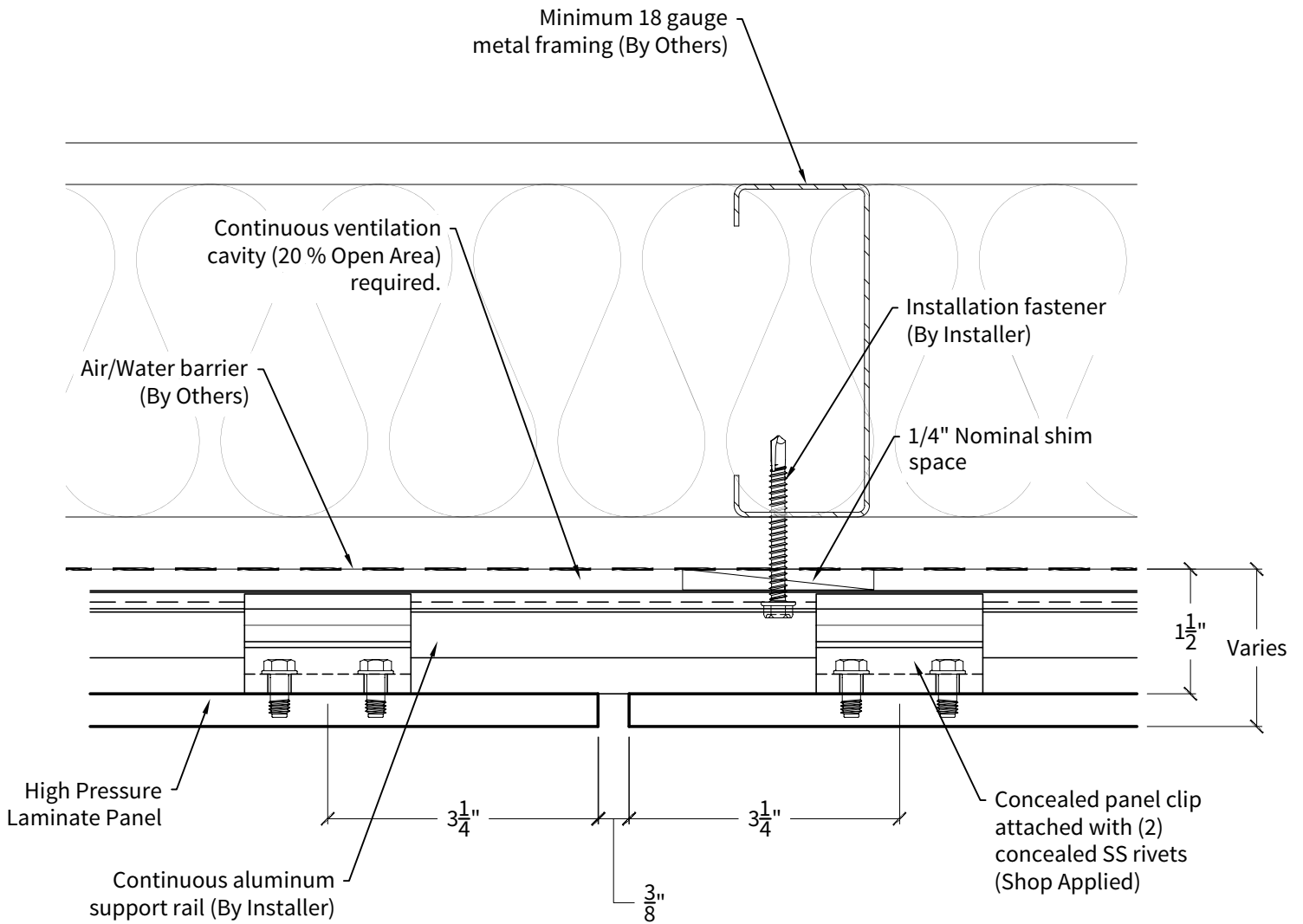
HPL RAINSCREEN - Typical vertical mid panel detail

3



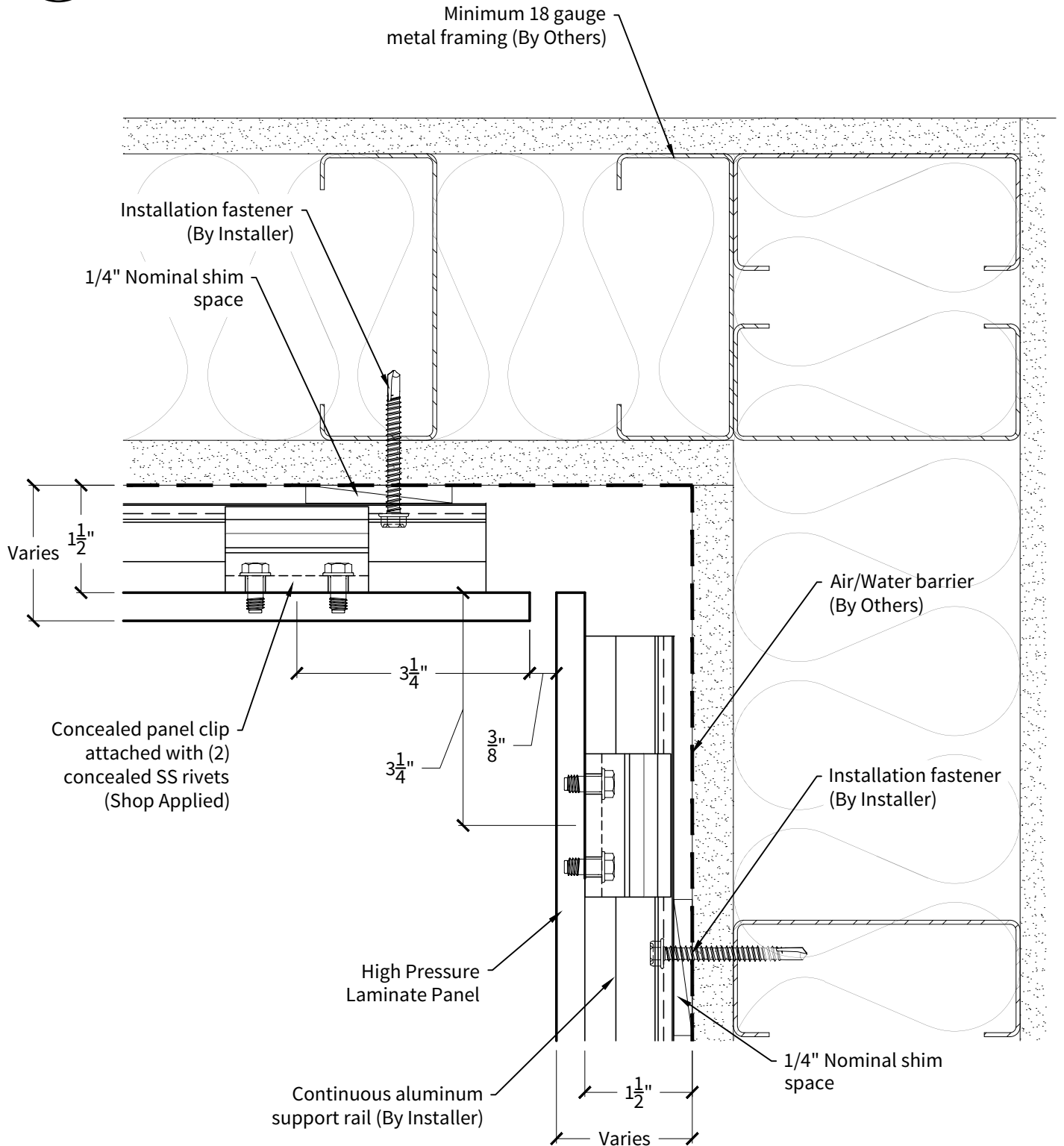
HPL RAINSCREEN - Typical vertical panel joint

4



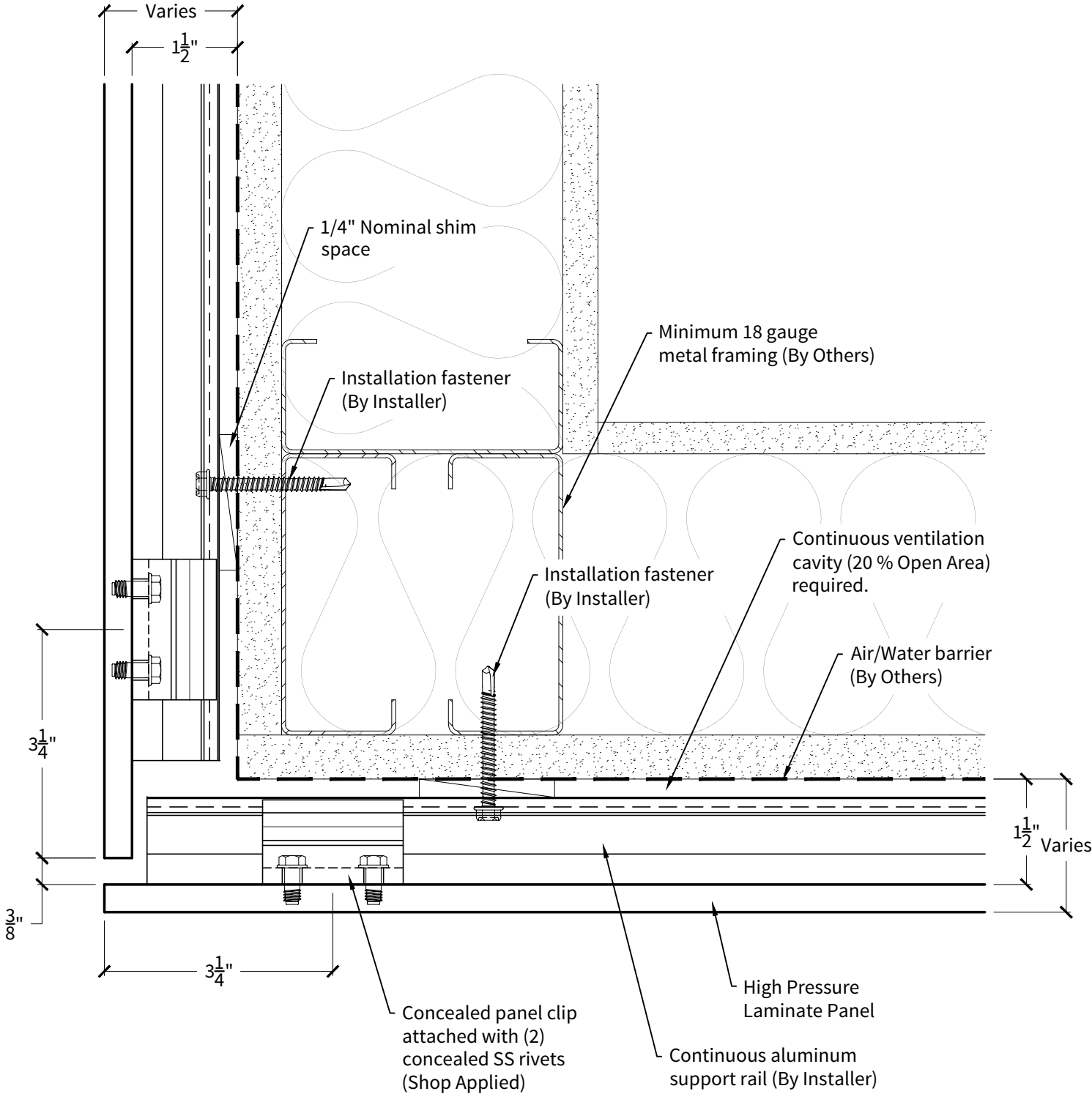
HPL RAINSCREEN - Typical inside corner

5



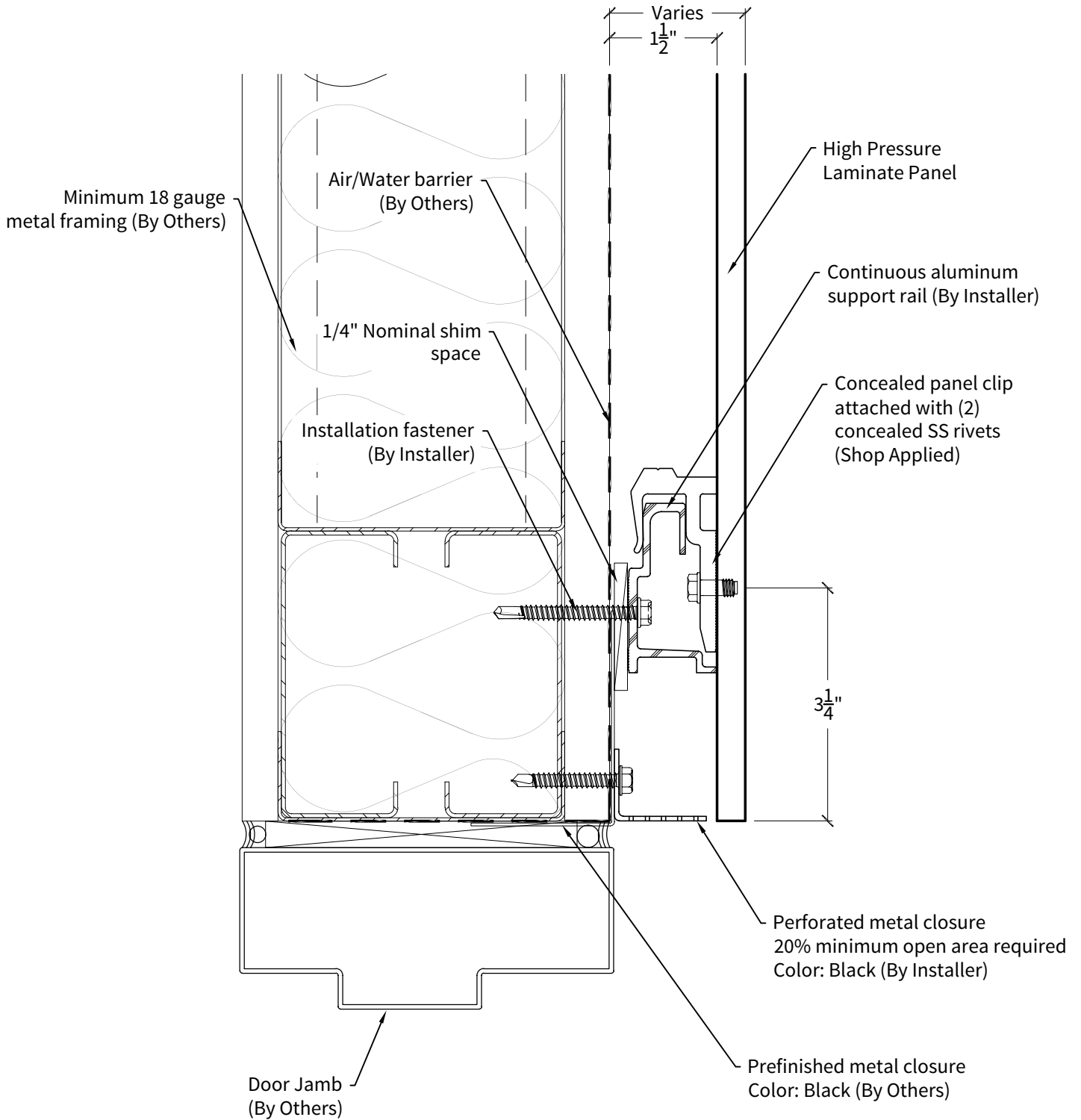
HPL RAINSCREEN - Typical outside corner

6



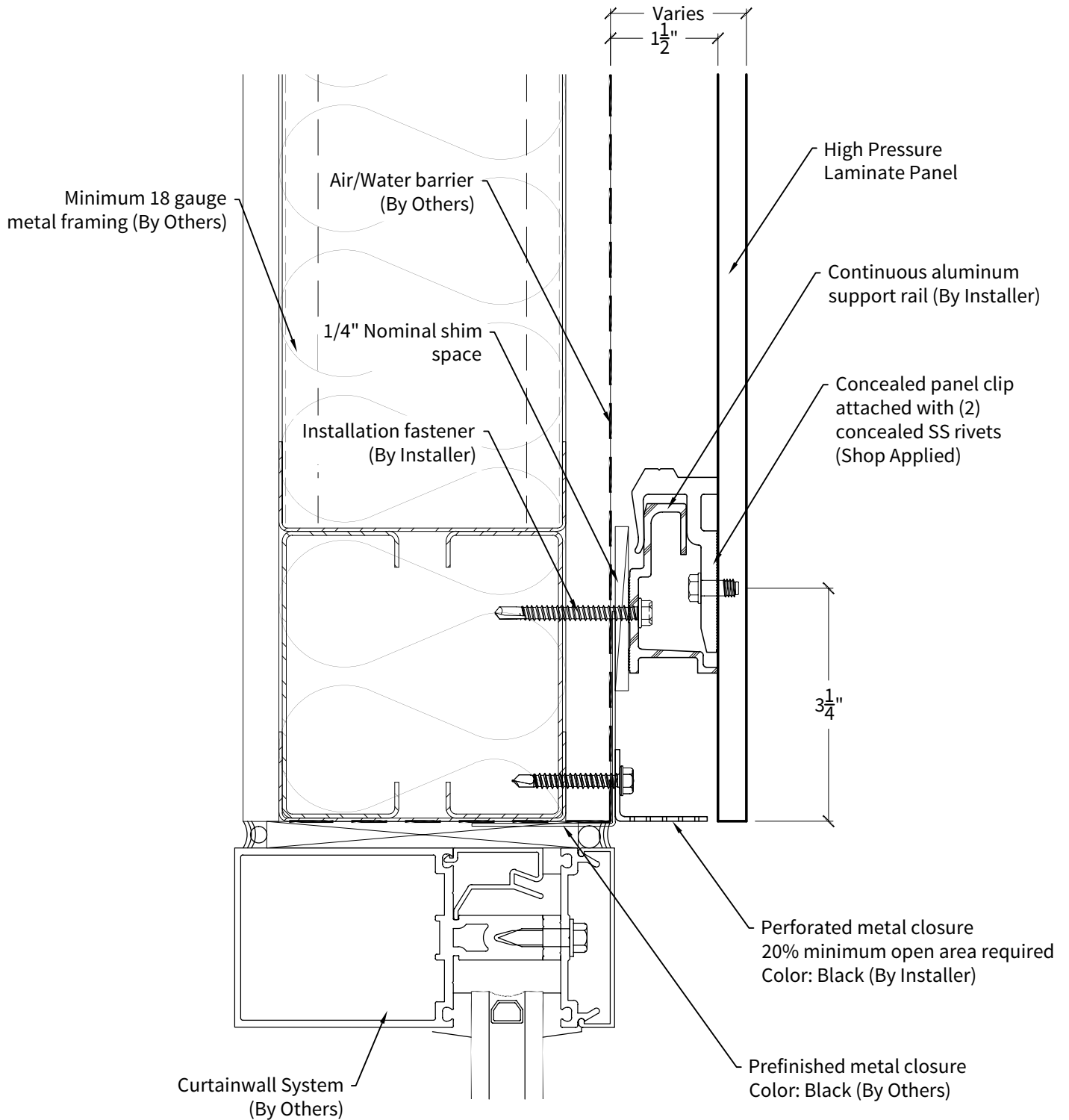
HPL RAINSCREEN - Typical door head detail

7



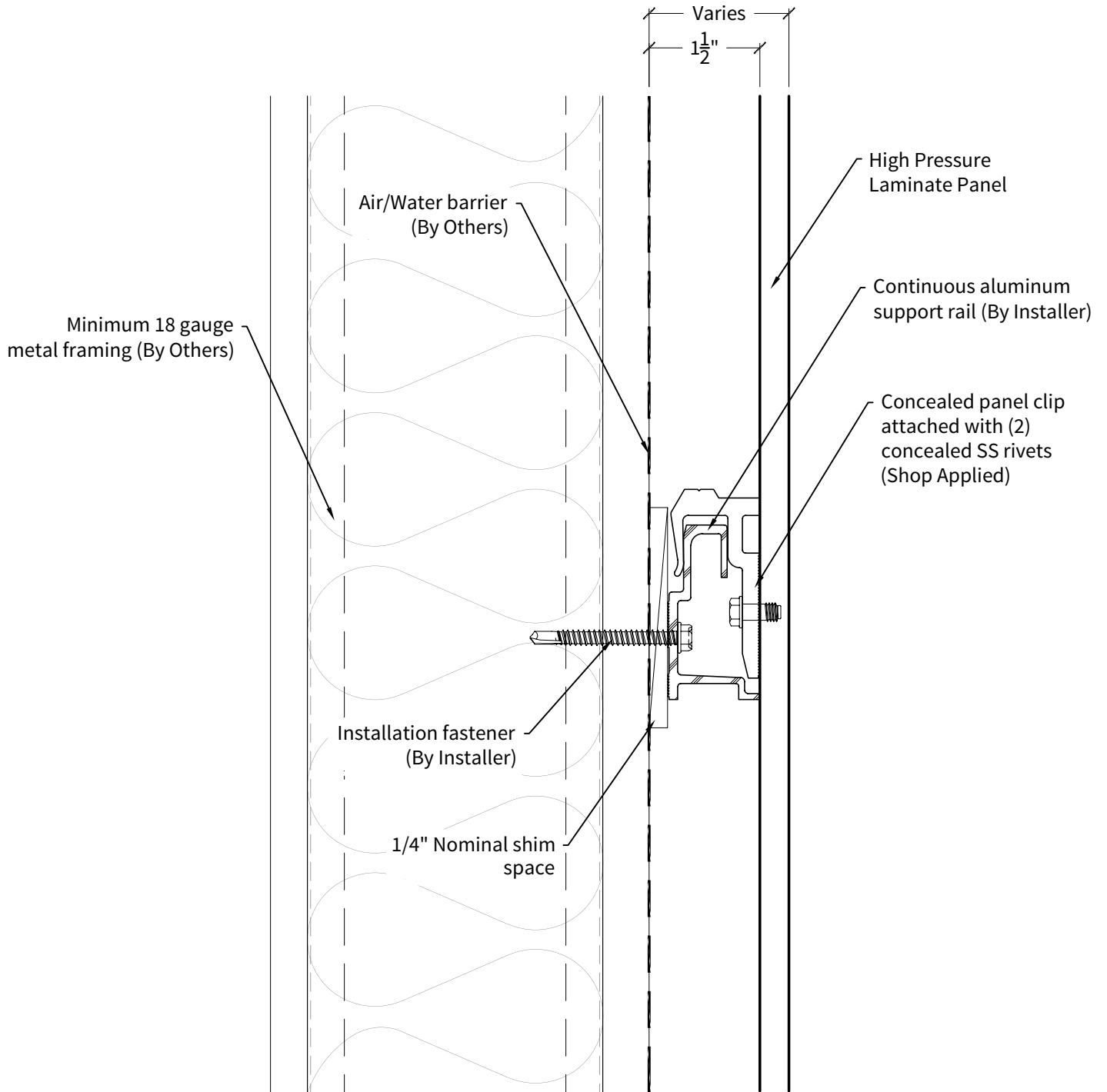
HPL RAINSCREEN - Typical window head detail

8



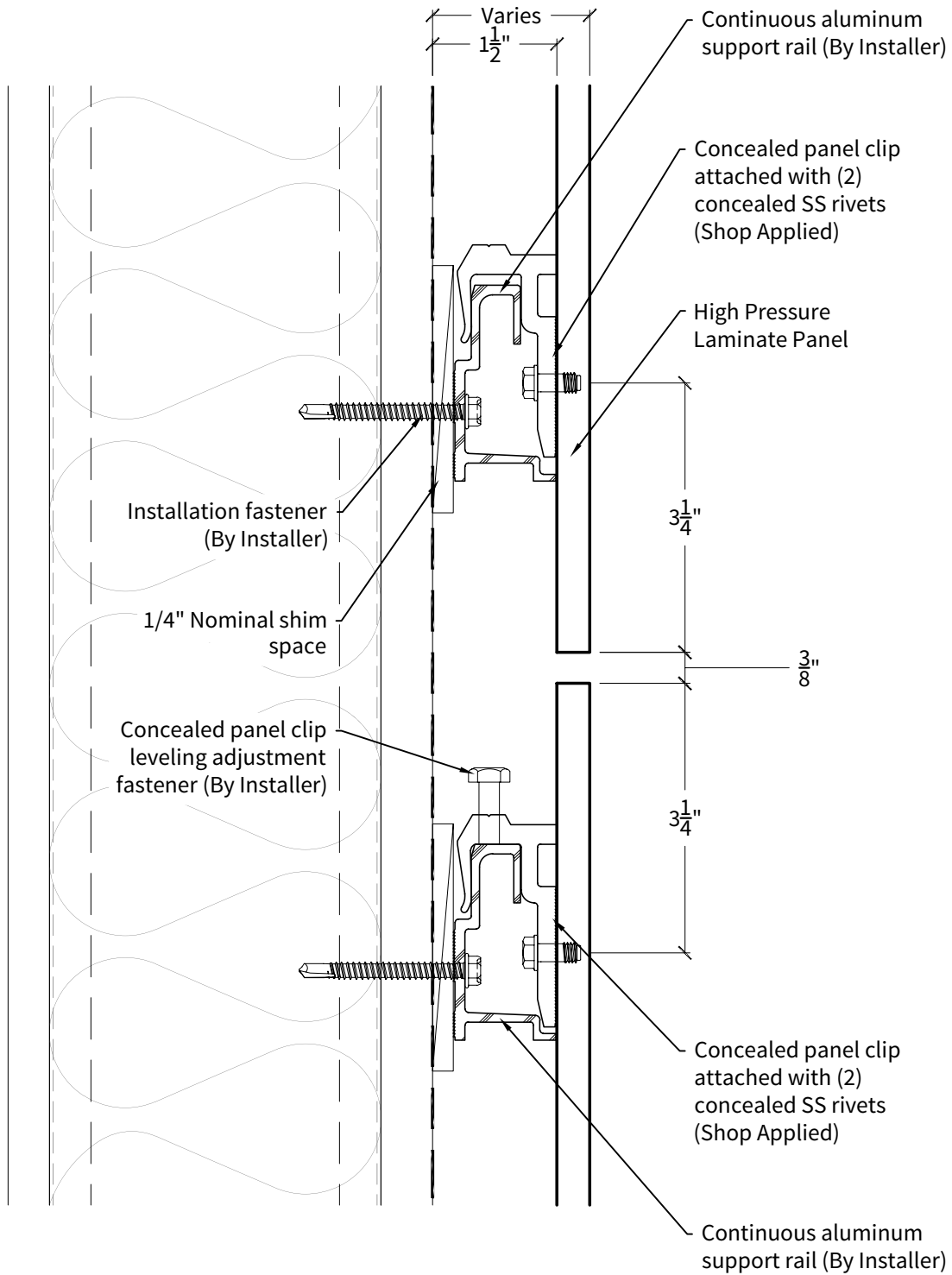
HPL RAINSCREEN - Typical horizontal mid panel detail

9



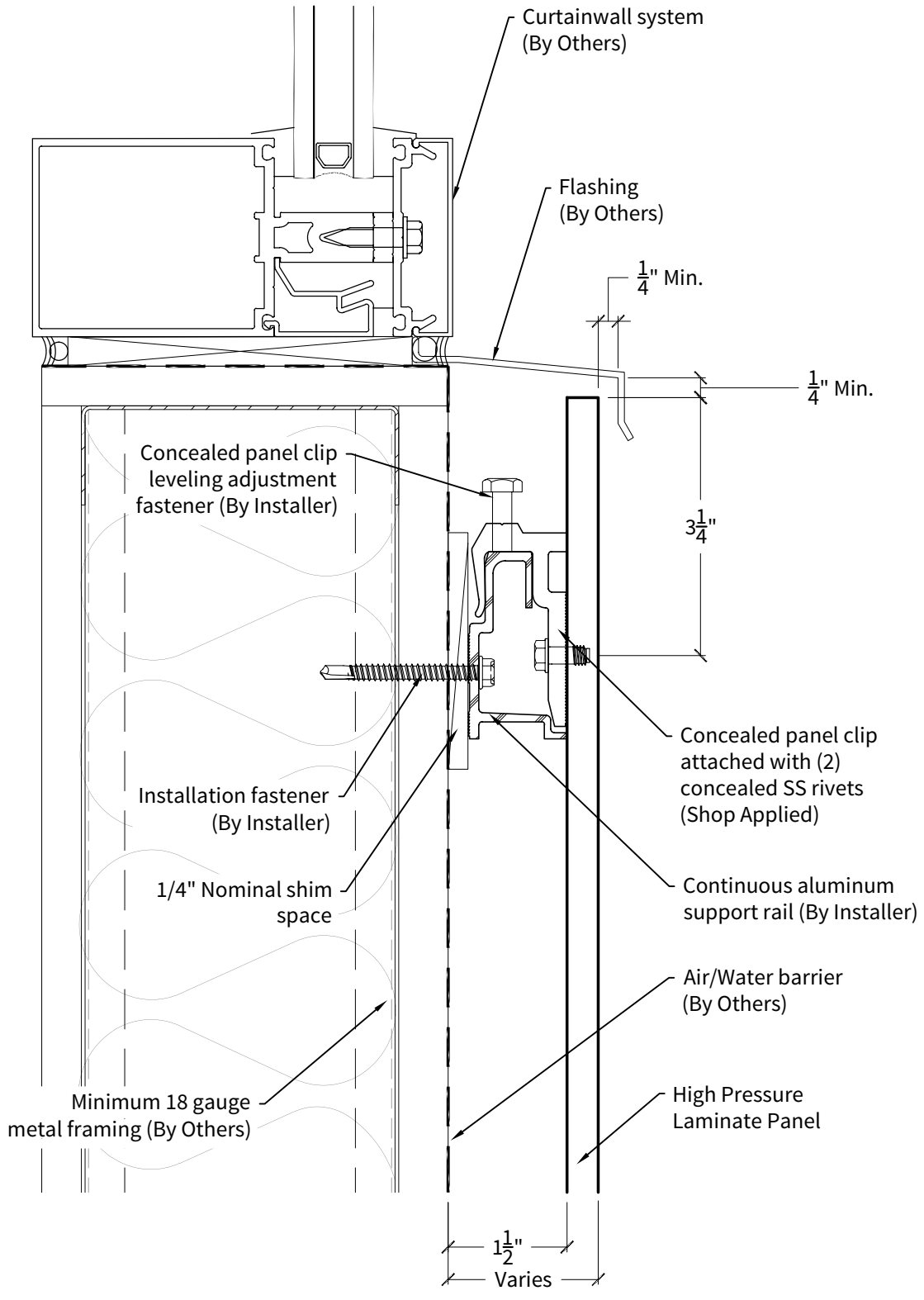
HPL RAINSCREEN - Typical horizontal panel joint

10



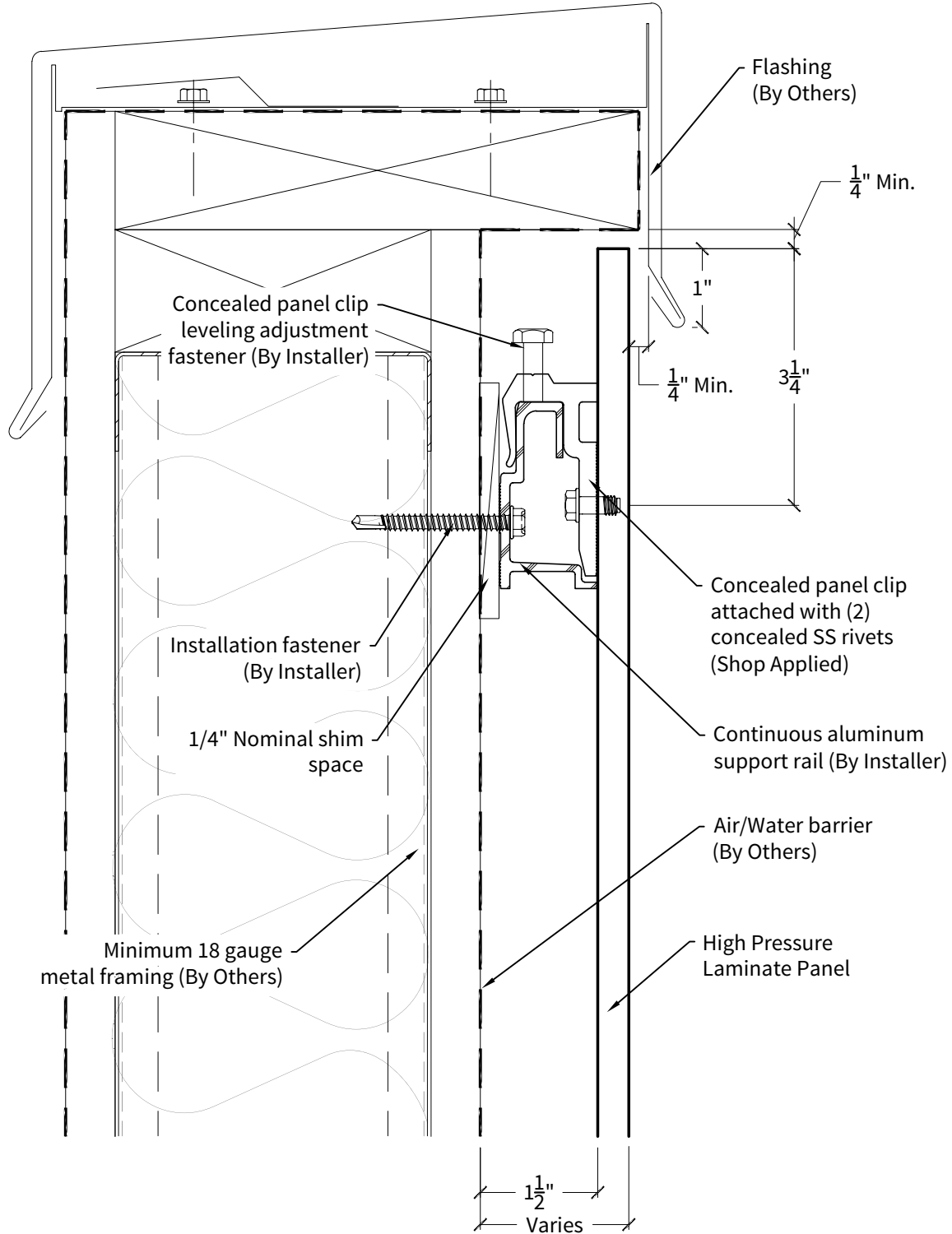
HPL RAINSCREEN - Typical window sill detail

11



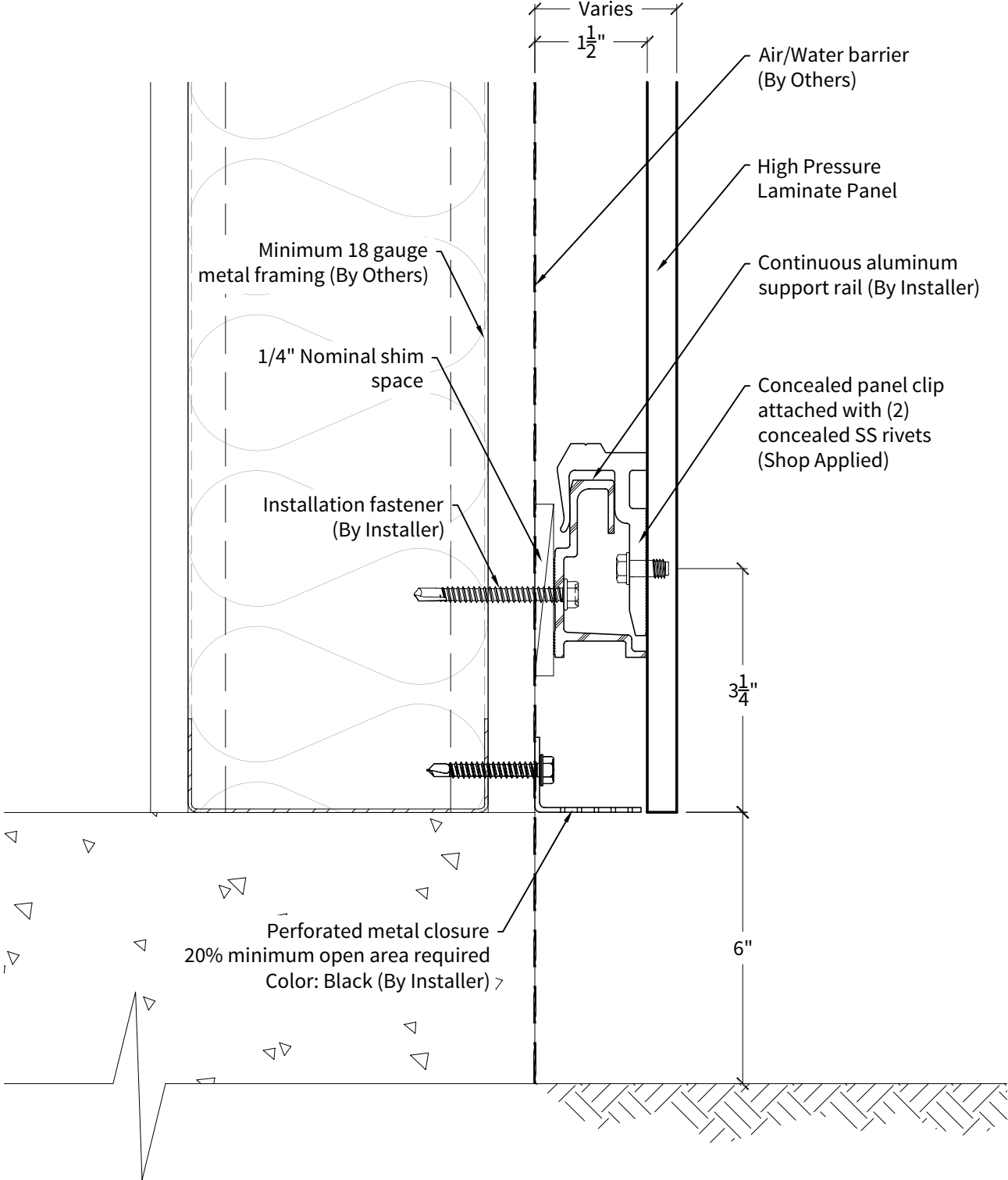
HPL RAINSCREEN - Typical termination at parapet cap

12



HPL RAINSCREEN - Typical base of wall detail

13



Lancaster, PA Plant: 800-477-2741 • Fax: 800-283-4289

Jackson, GA Plant: 800-884-4484 • Fax: 800-765-4484

Ft. Worth, TX Plant: 800-477-9066 • Fax: 817-488-0446

Cedar City, UT Plant: 800-432-2725 • Fax: 800-632-2725

Fabral.com • info@fabral.com

Due to product improvements, changes and other factors, Fabral reserves the right to change or delete information herein without prior notice.