



FABRAL® V-BEAM

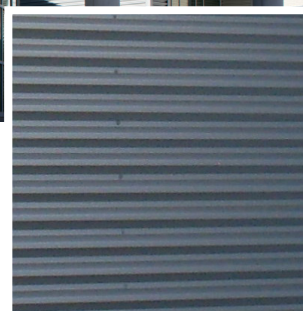
BRIEF PRODUCT SPECIFICATION



Lady Bird Johnson Middle School, Irving TX, USA

"Fabral® V-Beam gave us the flexibility to use two different gauges on Lady Bird Johnson Middle School. A heavier gauge was applied to the bottom of the wall for durability but without visually interrupting the design."

Matthew Nicholson, Corgan Associates



FABRAL CORE™

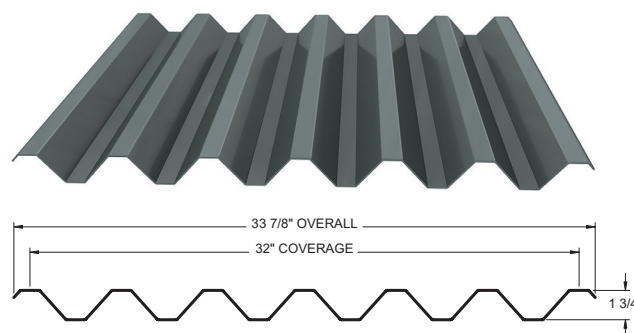
**You challenge us.
And we like it.**

Your vision for a building and what you want to achieve makes us think harder. It'd be easy to say - That won't work. Instead we go with - Let's see what we can do.

Fabral.com
800.884.4484

EXPOSED FASTENER ROOFING & WALL PANEL V-BEAM

With superior strength and spanning capability, Fabral® V-Beam is a high-performance panel suited for both roof and wall applications. In siding, V-Beam can be applied in both vertical and horizontal orientation to optimize design versatility. This exposed fastener panel, available with the unlimited color options inherent to all Fabral® products, is primed for use in demanding applications such as schools that are likely to see excessive use and abuse.



(Product details on reverse)

FABRAL®





FABRAL® V-BEAM

BRIEF PRODUCT SPECIFICATION

MANUFACTURER DESCRIPTION

- Fabral®, 308 Alabama Blvd, Jackson, GA 30233
- Telephone: 800.884.4484
- Email: sales@fabral.com
- Website: www.fabral.com

PRODUCT DESCRIPTION

Acceptable Product: Fabral® V-Beam
 Class 4 impact: UL2218
 Class A fire: UL790
 Wind Uplift & Fastener Spacing calculations are available upon request

GRAVITY LOAD TABLE (PSF)

Substrate	Spans	4'-0	5'-0	6'-0	7'-0	8'-0	9'-0	10'-0	11'-0
26 ga. Steel	3	156	100	69	51	39	31	25	-
24 ga. Steel	3	210	134	93	68	52	41	34	28
22 ga. Steel	3	272	174	121	89	68	54	43	36
20 ga. Steel	3	324	200	144	106	81	64	52	43
18 ga. steel	3	427	273	190	139	107	84	68	56
.032" alum.	3	185	119	82	60	46	37	30	24
.040" alum.	3	256	164	114	84	64	51	41	34
.050" alum.	3	320	205	142	105	80	63	51	46

Note: Allowable loads based on AISI and Aluminum Association Specifications. Allowable loads are based on stress only.

DESIGN INFORMATION

- Roof Slope: Minimum required - 2:12
- Purlin Spacing: Maximum – 5' on-center
- Field Curving: Minimum radius 200'
- Panel Length: Maximum - 45' (steel) 16' (alum.) Minimum - 4'
- Panel Width: 32" (steel) 42 2/3" (alum.)

PRODUCT INSTALLATION

Install panels plumb, level and straight so it is watertight and without waves or other distortions, allowing for thermal movement considerations. Apply sealant tape or caulking as necessary at flashing and panel joints to prevent water penetration.

PRODUCT MAINTENANCE AND WARRANTY

Fabral® provides a 20 year paint-finish warranty for cracking, chipping, peeling, fading and chalking – providing confidence in a long-lasting application.

To ensure the durability of your V-Beam panels, use proper care. Remove filings, grease, stains, marks or excess sealants from roof panels system to prevent staining. Store panels and flashings in a safe, dry environment.

RECENT PROJECTS TO REFERENCE

Segment	Project Name	Location	Quantity	Architect/Distributor
Government	Hickam Air Force Base	Oahu, HI		Sure Steel
Education	West End Community College	Nashville, TN	105 sq	N.B. Handy Co
Government	Port of Seattle, Terminal #46	Seattle, WA	279 sq	Ballard Sheet Metal
Education	Ensworth Elementary School	Bend, OR	283 sq	Jica Construction LLC

