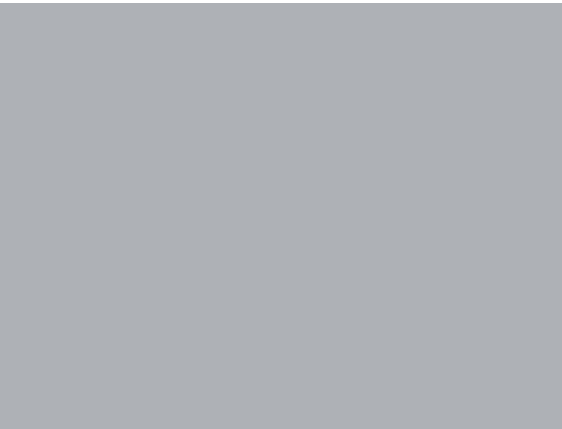


FABRAL



FABRAL

Fabral.com
800.884.4484

GOVERNMENT
Smart Building



Building systems in...
ment...
and

...rd Johnson Middle School, Irving TX, USA



“Relish a Challenge”

You challenge us. And we like it. Your vision for a building and what you want to achieve makes us think harder. It'd be easy to say - "That won't work." Instead we go with - "Let's see what we can do." As the leaders in metal building envelope solutions, we *push* the envelope.

We like it when you bring us a problem because we know we'll find the solution. We have the products, the manufacturing and the know-how. We offer everything you need for the *total* building envelope solution. At our core, we relish a challenge.



Fabral.com
800.884.4484

FABRALCORE™

Projects

Philadelphia Post Office
Philadelphia PA, USA
KlingStubbins

LYNX Central Florida Regional
Transportation Authority
Orlando FL, USA
Helman Hurley Charvat Peacock Architects, Inc.

Hickam Air Force Base
Oahu HI, USA
U.S. Army Corp of Engineers

Langley Inn
Hampton VA, USA

VA Outpatient Clinic
Cape Coral FL, USA

Ft. Benning
Fort Benning GA, USA

Ft. Knox
Fort Knox KY, USA

Whiteman Air Force Base
Whiteman AFB MO, USA

United Nations
Washington DC, USA



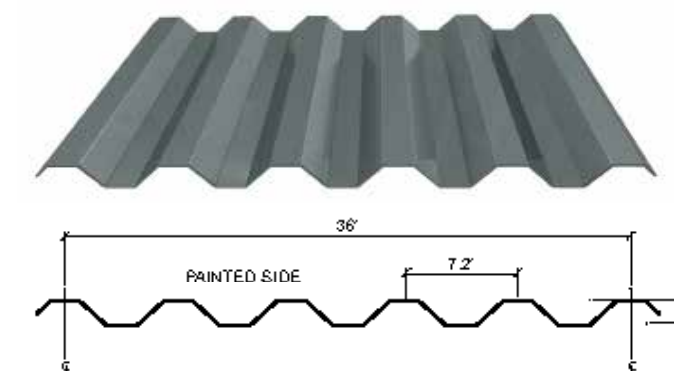
Philadelphia Post Office, Philadelphia PA, USA

Project Details

- Construction of this USPS mail facility kept 4,000 jobs in the city and by incorporating a perforated, stainless steel wall system, the design team created an environmentally sustainable building offering many benefits to those working within and those living in the surrounding neighborhood
- 27,000 square feet of Hefti-Rib® were utilized for this project

Product Details

Hefti-Rib®



TAKE IT TO THE POST

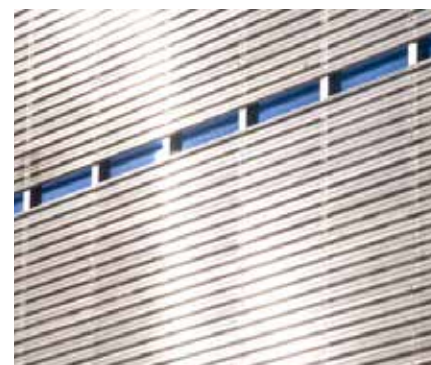
Philadelphia Post Office
Philadelphia PA, USA

The new Philadelphia Post Office has become as recognizable as its historic predecessor. Fabral® Hefti-Rib® exposed fastener wall panels in perforated, stainless steel canvas the exterior. The effect is modern and industrial. The panels provide superior durability and environmental advantages. Stainless steel adds solar-reflecting properties. And the material is completely recyclable, furthering the building's sustainability.

Perforation, such as in this project, is ideal for acoustical considerations, to help minimize wind loading or purely for an aesthetic effect.



Stainless steel is very strong and extremely corrosion resistant, especially when exposed to the elements such as smog and car pollution in major metropolitan areas.



Color Details

The Hefti-Rib® panels in this project are made of stainless steel. The architect chose to use them without applying a finish as a highly reflective design element.

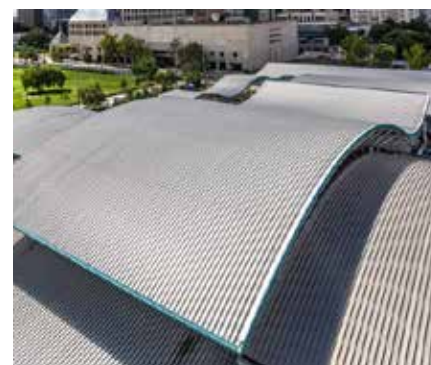


LYNX Central Florida Regional Transportation, Orlando FL, USA

TRANSPORTATION ON THE MOVE

LYNX Central Florida Regional Transportation Authority
Orlando FL, USA

LYNX Central Florida Regional Transportation Authority is the hub of the area's public transportation system. The curved administration building is emulated by a series of outdoor pedestrian platforms. Undulating space-frame roofs clad in Fabral® Deep Rib IV metal panels protect the platforms from the elements. Fabral® panels were custom curved to fit this distinct design.



Deep Rib IV showcases a bold rib design, ideal for horizontal and vertical wall applications.



The 4" deep ribs provide excellent strength and spanning capability.

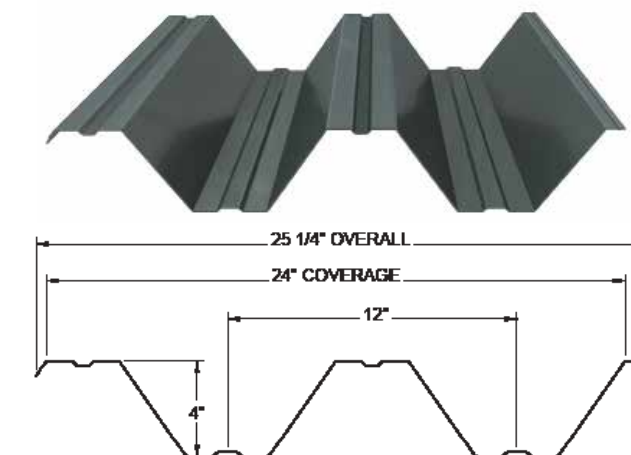


Project Details

- 91,700 square foot transportation office and bus terminal
- 86,000 square feet of Fabral® Deep Rib IV exposed fastener roof system
- Unique curving design showcases one of the many design options of the Fabral® Deep Rib IV panel .

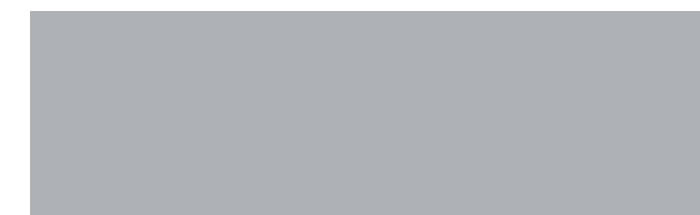
Product Details

Deep Rib IV



Color Details

Fabral® standard color, Bright Silver was strategically chosen for its reflective properties, helping to reduce heat absorption and enhancing energy efficiency.



Bright Silver



Hickam Air Force Base, Oahu, HI USA

TAKE FLIGHT

Hickam Air Force Base
Oahu, HI USA

The expansive hangar at Hickam Air Force Base, Hawaii encompasses sustainable design. Components of both structural steel and pre-engineered recovered materials were brought together. About 100,000 square feet of Fabral® Mighti-Rib® and V-Beam panels were used on the exterior and interior liner. These panels provide durability for the unique demands of the structure.

V-Beam provides superior strength and spanning capability while accommodating low roof slopes.



Mighti-Rib® utilizes a purlin bearing leg, which ensures proper attachment and lap engagement to provide a weathertight seal for a long-lasting building envelope.

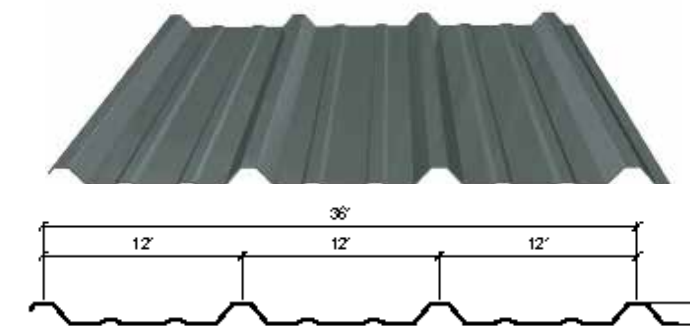


Project Details

- Hickam Air Force Base resides adjacent to Pearl Harbor and consists of 2,850 acres of land and facilities.
- 100,000 square feet of Fabral® Mighti-Rib® and V-Beam were used on the exterior and interior liner.

Product Details

Mighti-Rib®

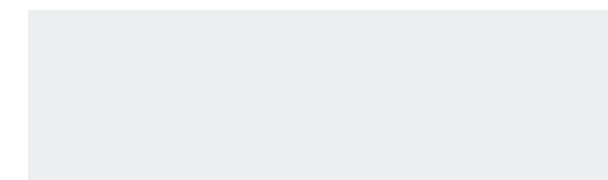


V-Beam



Color Details

Fabral® standard color, Bone White adds solar reflective properties, reducing the amount of heat absorbed by the structure.



Bone White



FABRALCORE™

You challenge us. And we like it.

Your vision for a building and what you want to achieve makes us think harder. It'd be easy to say - "That won't work." Instead we go with - "Let's see what we can do." As the leading provider of metal for building envelope solutions, we *push* the envelope.

We like it when you bring us a problem because we know we'll find the solution. We have the products, the manufacturing and the know-how. We offer everything you need for the *total* building envelope solution. At our core, we relish a challenge.

To learn more contact us at 800.884.4484 or Fabral.com.

System Support
 Education
 Project Consulting
 Technical Support
 Customer Care



Education

We've got the knowledge and know-how to bring your vision to life. Through hands-on seminars and web-based classes, we can help you achieve your vision for a building.



Project Consulting

We're called the "Masters of Metal" for a reason. We work with you to guide you through each phase of your project from design to spec and completion.



Technical Support

Your idea for a building and what you want to achieve challenges us. Bring us your ideas and our engineers will find a way to make them work.



Customer Care

Have a question? Need a quote? Our Customer Care team is there when you need them, expertly trained to answer your questions.