

**FABRAL**<sup>®</sup>  
METAL WALL AND ROOF SYSTEMS

DIVISION 7

STANDARD STOCKED  
**ARCHITECTURAL COLORS**



## Core Colors

PVDF - 70% polyvinylidene flouride resin paint system



Colonial Red<sup>Δ</sup>  
SR: .34 IE: .86 SRI: 35



Banner Red  
SR: .42 IE: .84 SRI: 45



Brandywine  
SR: .26 IE: .85 SRI: 24



Patina Green<sup>Δ</sup>  
SR: .29 IE: .87 SRI: 29



Classic Green  
SR: .26 IE: .84 SRI: 24



Hartford Green<sup>\*</sup>  
SR: .10 IE: .82 SRI: 2



Regal Blue  
SR: .28 IE: .86 SRI: 27



Slate Blue  
SR: .26 IE: .85 SRI: 24



Slate Gray<sup>Δ</sup>  
SR: .37 IE: .86 SRI: 39



Charcoal<sup>Δ</sup>  
SR: .32 IE: .85 SRI: 32



Matte Black  
SR: .27 IE: .86 SRI: 26



Dark Bronze  
SR: .26 IE: .84 SRI: 24



Mansard Brown<sup>Δ</sup>  
SR: .29 IE: .86 SRI: 29



Medium Bronze<sup>Δ</sup>  
SR: .30 IE: .87 SRI: 31



Sierra Tan<sup>Δ</sup>  
SR: .35 IE: .86 SRI: 37



Surrey Beige<sup>Δ</sup>  
SR: .40 IE: .86 SRI: 43



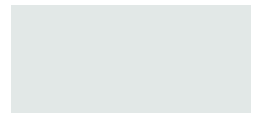
Sandstone<sup>Δ</sup>  
SR: .54 IE: .86 SRI: 63



Almond<sup>Δ</sup>  
SR: .63 IE: .86 SRI: 75



Bone White<sup>□</sup>  
SR: .72 IE: .84 SRI: 87



Regal White<sup>□</sup>  
SR: .68 IE: .86 SRI: 82



Dove Grey  
SR: .49 IE: .87 SRI: 56



Extra Dark Bronze  
SR: .05 IE: .89 SRI: -1



Teal  
SR: .28 IE: .87 SRI: 28



Hemlock Green  
SR: .28 IE: .87 SRI: 28



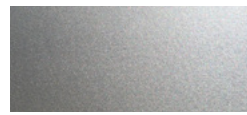
Terra Cotta  
SR: .27 IE: .85 SRI: 41

## Mica Colors<sup>†</sup>

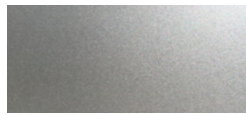
PVDF paint system



Pewter<sup>Δ</sup>S11  
SR: .36 IE: .85 SRI: 38



Bright Silver<sup>Δ</sup>S66  
SR: .60 IE: .77 SRI: 68



Silversmith<sup>Δ</sup>S15  
SR: .53 IE: .78 SRI: 59



Champagne<sup>Δ</sup>S20  
SR: .37 IE: .83 SRI: 38



Bright Copper<sup>Δ</sup>S25  
SR: .49 IE: .85 SRI: 55

## 26 Gauge Low Gloss

Also available in Acrylic Coated Galvalume. (not shown) PVDF paint system



Slate Gray  
SR: .37 IE: .86 SRI: 39



Sierra Tan  
SR: .46 IE: .87 SRI: 52



Dark Bronze  
SR: .28 IE: .86 SRI: 27



Medium Bronze  
SR: .30 IE: .86 SRI: 30



Colonial Red  
SR: .31 IE: .86 SRI: 31



Classic Green  
SR: .31 IE: .87 SRI: 32



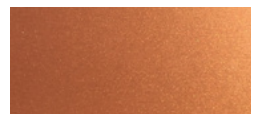
Hartford Green  
SR: .08 IE: .89 SRI: 3



Slate Blue  
SR: .30 IE: .87 SRI: 31

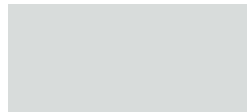


Matte Black  
SR: .26 IE: .86 SRI: 25



Bright Copper  
SR: .41 IE: .85 SRI: 44

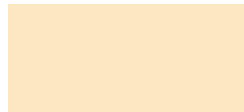
## Enduracote® Siliconized Modified Polyester (SMP)



**Brite White 824**  
SR .60 IE .85 SRI 71



**White 899**  
SR .54 IE .89 SRI 64



**Ivory 883**  
SR .62 IE .89 SRI 75



**Light Stone 887**  
SR .51 IE .90 SRI 60



**Tan 855**  
SR .38 IE .90 SRI 42



**Hickory Moss 870**  
SR .38 IE .89 SRI 39



**Cocoa Brown 856**  
SR .35 IE .85 SRI 36



**Antique Bronze 854**  
SR .29 IE .83 SRI 27



**Light Gray 889**  
SR .31 IE .87 SRI 32



**Charcoal Gray 851**  
SR .35 IE .86 SRI 37



**Ash Gray 848**  
SR .38 IE .87 SRI 39



**Caribbean Blue 881**  
SR .27 IE .90 SRI 28



**Gallery Blue 826**  
SR .29 IE .86 SRI 29



**Evergreen 875**  
SR .27 IE .86 SRI 26



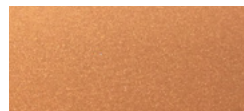
**Hartford Green 821**  
SR .29 IE .85 SRI 28



**Brick Red 898**  
SR .31 IE .90 SRI 33



**Brite Red 845**  
SR .32 IE .86 SRI 33



**Copper Penny 939 †**  
SR .48 IE .83 SRI 53



**Patina Green 893**  
SR .38 IE .90 SRI 42



**Classic Burgundy 853**  
SR .26 IE .86 SRI 25

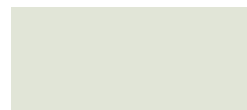


**Dark Brown 859**  
SR .30 IE .86 SRI 30



**True Black 882**  
SR .30 IE .85 SRI 30

## Polydure® Polyester Paint System



**White 121**



**Tan 122**



**Light Stone 123**



**Ash Gray 140**



**Seal Brown 126**



**Tile Red 125**



**Stone Gray 124**



**Dark Green 127**

## valspar® PVDF

- 30-year limited paint warranty for film integrity
- 30-year limited paint warranty for fade & chalk
- Bright Copper color is offered in a Kynar (PVDF) finish and will feature Fabral's new 30-year PVDF limited warranty and 20-year limited substrate warranty. These warranties cover cracking, checking, peeling and chalking.

*Note: Due to Mica colors, including copper penny, being a metallic finish, the 30-year warranty for fading does not apply as outlined in the PVDF warranty sheet.*

## ENDURACOTE®

PREMIUM DEFENSE  
Against the Elements

- Lifetime film integrity warranty for walls & roofs
- 30-year warranty against fade & chalk for walls & roofs
- 10-year edge rust warranty against acid rain (galvanized only)

## Polydure Warranty

- 10-year limited paint warranty for film integrity
- 3-year limited sidewall panel paint warranty for fade and chalk (5-year limited warranty for white)

SR = Solar Reflectivity IE = Initial Emissivity SRI = Solar Reflective Index

## Crinkle Coat

SMP paint system



**Charcoal**  
SR .33 IE .88 SRI 35



**Burnished Slate**  
SR .31 IE .87 SRI 32



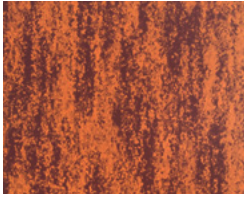
**Evergreen**  
SR .33 IE .86 SRI 37

The unique texture redirects light for enhanced visual depth, promising a step-change improvement over flat-panels' appearance. The coating has been responsively designed, so its subtle shading mirrors the eye's natural horizontal motion.

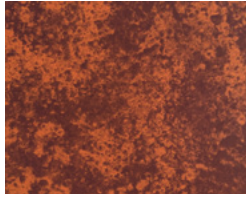
Available in our Grand Rib 3 Plus Profile

## COR-TEN AZP®

PVDF paint system



**COR-TEN AZP® Raw**  
SR .32 IE .89 SRI 34



**COR-TEN AZP® Robust**  
SR .32 IE .85 SRI 32

With age comes a classic and sublime beauty, and now that look is available for your next roofing or cladding project. Our unique, Weathered Metal Series™, you now have a choice of two additional, distinct stages of aging — moderately weathered Raw and more heavily weathered Robust — to accompany the fully weathered appearance of COR-TEN AZP® steel. Each pattern is carefully crafted and engineered to give your next roofing or cladding project the authentic look of timelessness.

## EuraZinc Pro



**EuraZinc Pro**  
SR .20 IE .69 SRI 14

EuraZinc is a unique self-weathering zinc coating on aluminum. Real zinc-particles in the topcoat allow the surface to weather over time from an initial light grey finish to a dark and natural weathered zinc finish.

## Custom Colors



Can't find your color? Fabral can tackle the most challenging custom color orders, expertly matching your samples for limitless possibilities.

To learn more contact:

**FabralCore™** at  
**800.884.4484** or  
**Fabral.com**.

† Featuring a pearlescent mica finish; subject to premium pricing.

Colors shown are as close to actual colors as allowed by the printing process. Actual metal samples are available. Colors may appear different when viewed at different angles and under different lighting conditions. Due to product improvements, changes and other factors, we reserve the right to change or delete information herein without prior notice.



\*All Standard Stocked colors are ENERGY STAR® approved except Hartford Green

□ LEED® compliant for low slope and steep slope

△ LEED® compliant for steep slope only

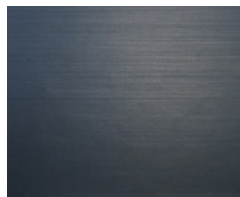
## Non-Stocked Specialty



**Anomax® Silver Bronze**

A new and anodized finish:

The combination of the anodizing look and the benefits of pre-coated aluminum allows new architectural possibilities.



**Alunatur® Titanium Brushed**

Natural looking finishes:

Consisting of a wide range of (semi-) transparent clearcoats which are available in different coating qualities. On top of the choices in colors you can also choose between special transparent coatings and brushed substrate qualities.



**Mica Onyx White Blue**

Colors that change with lighting:

Based on multi-layer PVDF coating systems which contain mica effect pigments. This unique combination causes a fascinating color variation that changes depending upon viewing angle and lighting.

Fabral provides numerous options through its specialty color program. Natural metals; brushed or anodized aluminum and a host of vibrant colors offer unbridled options for unique design.

View our complete color and finish options at **Fabral.com**

ARCHITECTURAL PVDF				STEEL				ALUMINUM			
FABRAL COLOR	SR	IE	SRI	26GA.†	24GA.†	22GA.‡	18GA.‡	.032"††	.040"††	.050"††	.063"††
Regal White	.68	.86	82		●■▲◆	●	●	●■			●
Bone White	.72	.84	87		●	●	●	●	●	●	
Almond	.63	.86	75		●			●	●	●	
Sandstone	.54	.86	63		●■▲◆	●		●	●	●	
Surrey Beige	.40	.86	43		◆	●		●	●	●	
Sierra Tan	.35	.86	37	LG	●			●	●	●	
Medium Bronze	.30	.87	31	LG	●■◆	●	●	●	●	●	●
Mansard Brown	.29	.86	29		●			●	●	●	
Dark Bronze	.26	.84	24	LG	●■▲◆	●	●	●■	●	●	●
Matte Black	.27	.86	26	LG	●	●		●	●	●	
Slate Gray	.37	.86	39	LG	◆			●	●		
Charcoal	.32	.85	32		●	●		●	●	●	
Slate Blue	.26	.85	24	LG	●			●			
Regal Blue	.28	.86	27		●			●			
Patina Green	.29	.87	29		●			●			
Classic Green	.26	.84	24	LG	●■	●		●	●		
Hartford Green	.10	.82	2	LG	●			●		●	
Brandywine	.26	.85	24		●			●			
Colonial Red	.34	.86	35	LG	●			●			
Pewter	.36	.85	38		●			●			
Bright Silver	.60	.77	68		●			●■		●	
Silversmith	.53	.78	59		●			●			
Champagne	.37	.83	38		●			●			
Bright Copper	.49	.85	55	LG	●■			●■			
Banner Red	.42	.84	45		●						
Dove Grey	.49	.87	56		●			●		●	
Extra Dark Bronze	.05	.89	-1		●			●		●	
Teal	.28	.87	28		●						
Hemlock Green	.28	.87	28		●						
Terra Cotta	.39	.84	41		●						
EuraZinc Pro	.20	.69	14						◇		

PAINT PERFORMANCE PROPERTIES	HOT DIPPED GALVANIZED STEEL OR GALVALUME®	ALUMINUM
<b>Accelerated Weathering</b> ASTM D 4587 (Drew Cycle Weatherometer) ASTM G 23	Hours: 3,000 Total Chalk: Rating 8 Color: 5 Δ E Hunter units max Hours: 5,000 Total Chalk: Rating 8 Color: 5 Δ E Hunter units max	Hours: 3,000 Total Chalk: Rating 8 Color: 5 Δ E Hunter units max Hours: 5,000 Total Chalk: Rating 8 Color: 5 Δ E Hunter units max
<b>Salt Spray</b> ASTM B 117	Hours: 1,000 Total Scribe: Rating 7 1/16" (1.6mm) Field: Rating 10, no blisters	Hours: 3,000 Total Scribe: Rating 10, no creepage Field: Rating 10, no blisters
<b>Humidity</b> ASTM D 2247	Hours: 2,000 Total Rating: 10, no blisters	Hours: 3,000 Total Rating: 10, no blisters
<b>Formability</b> ASTM D 4145	0T-3T	0T-3T
<b>ASTM D 522</b> (Elongation over 1/8" mandrel)	No cracking No loss of adhesion	No cracking No loss of adhesion
<b>Pencil Hardness</b> ASTM D 3363	HB-2H	HB-2H
<b>Abrasion Resistance</b> ASTM D 968	55-75 Liters of falling sand	55-75 Liters of falling sand
<b>Specular Gloss</b> ASTM D 523	20-35 at 60°	20-35 at 60°
<b>Reverse Impact</b> ASTM D 2794	2 x Metal thickness in inch-lbs. No loss of adhesion	1 1/2 x Metal thickness in inch-lbs. No loss of adhesion
<b>Flame Test</b> ASTM E 84	Class A rated coating	Class A rated coating

† Standard Coil Width is 48.25"

‡ Standard Coil Width is 44.375"

● Available in Standard Coil Width.

■ Available in 40.25" Coil Width.

▲ Available in 38" Coil Width.

◆ Available in 44.375" Coil Width.

◇ Available in 48.189" Coil Width.

LG Low Gloss PVDF Paint

**NOTES ON AVAILABILITY:**

- 26ga, 24ga, .032", .040", .050" & .063" are standard 48.25" in width, 22ga & 18ga are 44.375" in width for painted items.
- Standard inventory is non-embossed. Please contact us for the availability of stucco embossing.
- Protective strippable film is available upon request.
- Mica colors are subject to premium pricing. Due to the unique effect of the Mica finishes, appearances may vary from batch to batch.
- Subject to change without notice.
- Unpainted, acrylic coated, Aluminum-Zinc Alloy steel (AZ-55) is maintained in: 26ga x 20", 26ga x 28", 26ga x 48.25", 24ga x 20", 24ga x 24", 24ga x 28", 24ga x 48.25", 22ga x 44.375", 22ga x 48.25", 20ga x 44.375" and 18ga x 44.375".
- All colors are supplied in Medium Gloss (20-35 at 60°). Low Gloss available subject to minimum coating run.

Fabral® standard architectural colors and finishes feature 70% polyvinylidene fluoride (PVDF) resin paint systems to ensure long term color retention and performance. Custom colors and finishes are also available. Minimum quantities and set up charges may apply.

## SILICONIZED MODIFIED POLYESTER - ENDURACOTE®

† Standard Coil Width is 40.875"

Color	#	SR	IE	SRI	29GA.†	26GA.‡	24GA.‡
White	899	.62	.86	64	•	•	•
Brite White	824	.53	.85	71	•	•	
Tan	855	.44	.84	42	•	•	
Antique Bronze	854	.26	.83	27	•	•	•
Cocoa Brown	856	.26	.85	36	•	•	
Hartford Green	821	.29	.85	28		•	
Charcoal Gray	851	.27	.85	37	•	•	•
Gallery Blue	826	.25	.86	29		•	
Light Gray	889	.31	.87	32	•	•	
Brick Red	898	.32	.86	33	•	•	•
Light Stone	887	.52	.86	60	•	•	
Caribbean Blue	881	.26	.85	28		•	•
Evergreen	875	.27	.85	26	•	•	•
Hickory Moss	870	.38	.87	39	•	•	•
Ivory	883	.61	.86	75	•	•	
Ash Gray	848	.38	.87	39		•	
Brite Red	845	.25	.86	33		•	
Bright Copper - KYNAR	525	.48	.77	53		•	•

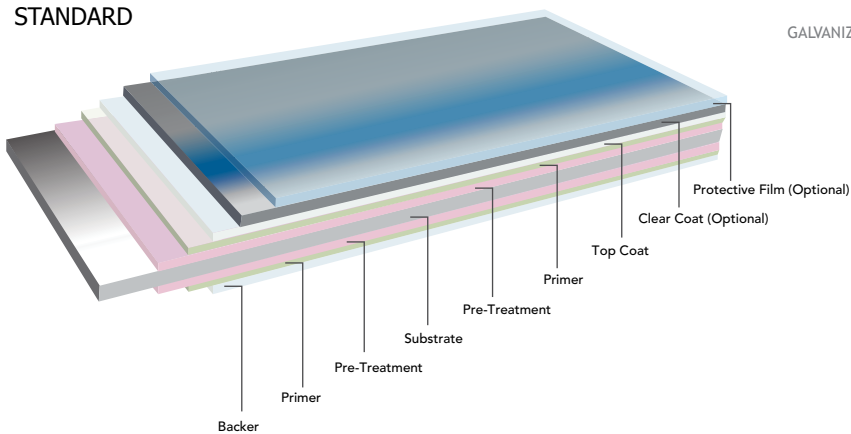
## POLYESTER - POLYCOTE®

‡ Standard Coil Width is 41.5625"

White	121	—	—	—		•	
Tan	122	—	—	—		•	
Light Stone	123	—	—	—		•	
Ash Gray	140	—	—	—		•	
Seal Brown	126	—	—	—		•	
Tile Red	125	—	—	—		•	
Stone Gray	124	—	—	—		•	
Dark Green	127	—	—	—		•	

### ARCHITECTURAL PVDF PAINT SYSTEM

#### STANDARD



### ENDURACOTE® PAINT SYSTEM

