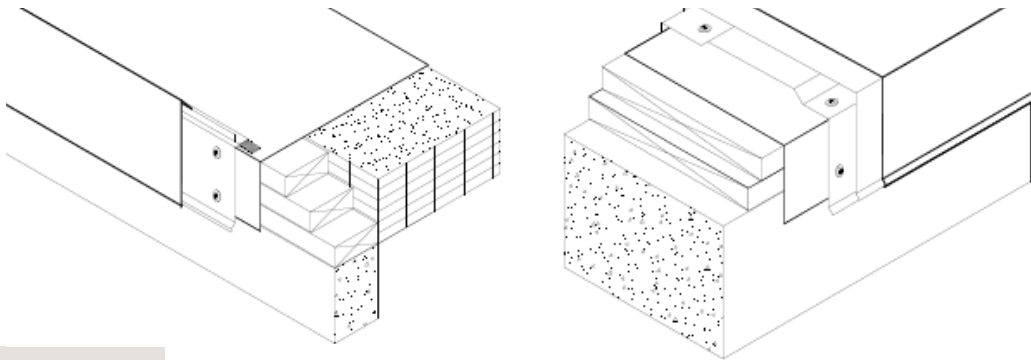


# FABRAL® EDGE METAL

## BRIEF PRODUCT SPECIFICATION



### FABRAL CORE™

You challenge us.  
And we like it.

Your vision for a building and what you want to achieve makes us think harder. It'd be easy to say - That won't work. Instead we go with - Let's see what we can do.

Fabral.com  
800.884.4484

### Total System Offering Edge Metal and Coping

For the desired finished look, Fabral offers flashing, trim and edge metals in a variety of substrates, profiles and finishes. The easy-to-install finishing touches help maintain temperature and create design distinction.

Fabral edge metal offering is ANSI SPRI ES-1 tested and approved and includes:

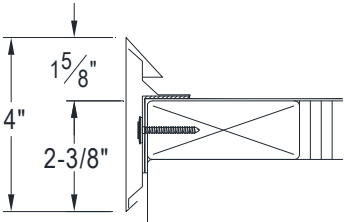
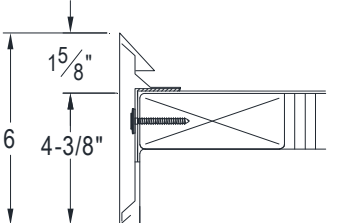
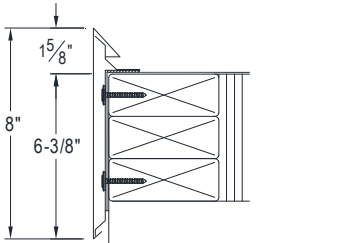
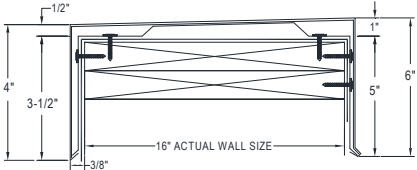
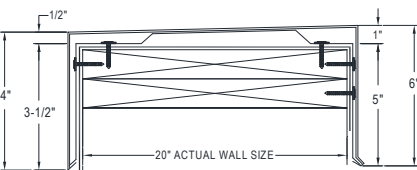
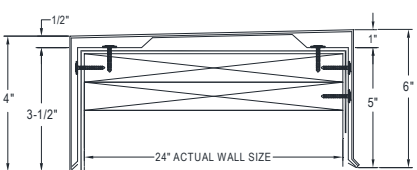
- 4" Face Edge Metal
- 6" Face Edge Metal
- 8" Face Edge Metal
- 16" Coping
- 20" Coping
- 24" Coping

(Product details on reverse)

# FABRAL®

# FABRAL® EDGE METAL / COPING

## ANSI/SPRI ES-1 TESTING RESULTS SUMMARY

Profile	Material				
	24 ga Steel	22 ga Steel	0.04 Alum	.050 Alum	
<b>4" Face Edge Metal</b> 	Front Face	400 PSF	500 PSF	330 PSF	430 PSF
<b>6" Face Edge Metal</b> 	Front Face	320 PSF	350 PSF	320 PSF	220 PSF
<b>8" Face Edge Metal</b> 	Front Face	230 PSF	250 PSF	250 PSF	230 PSF
<b>16" Coping</b> 	Front Face	61 PSF	73 PSF	61 PSF	67 PSF
	Top	100 PSF	120 PSF	100 PSF	110 PSF
<b>20 inch Coping</b> 	Front Face	43 PSF	61 PSF	43 PSF	61 PSF
	Top	70 PSF	100 PSF	70 PSF	100 PSF
<b>24 inch Coping</b> 	Front Face	37 PSF	49 PSF	37 PSF	43 PSF
	Top	60 PSF	80 PSF	60 PSF	70 PSF