



4.0 Wine Cellar, Fredericksburg, TX, USA

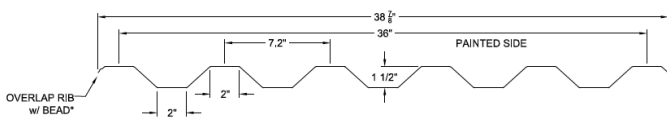
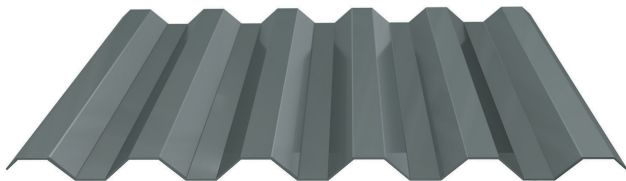
*"For this winery concept, we selected the Hefti-Rib panel. It created bold shadows, installed quickly and was easy to acquire. We were so pleased with it that we used surplus material to build and skin an adjacent well house."*

- Andrew Bray, Mustard Design Architects, Principal, AIA

## HEFTI-RIB®

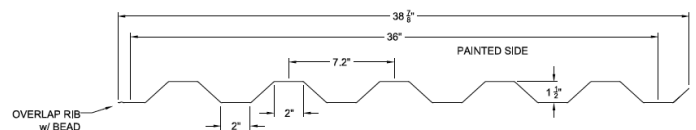
### EXPOSED FASTENER ROOFING & SIDING PANEL

Fabral® Hefti-Rib® is a classically designed exposed fastener panel with 7.2" rib spacing. With exceptional durability and unlimited color options, Hefti-Rib® is the preferred choice for function and creativity. The unique construction of Hefti-Rib® allows panels to follow every curve of your design. And it's suitable for use on both wall and roof applications (in siding only, can be applied in vertical and horizontal orientation). With Hefti-Rib® your vision is limitless.



Roof & Wall Application

Panels shown are the standard options with nominal dimensions as shown. Panel material (ie steel or aluminum) and paint type will limit available option. Contact Fabral for more information.



Wall Only Application

Other versions available. See Panel Options document or contact Fabral for more information.

### MANUFACTURER DESCRIPTION

- Fabral®, 308 Alabama Blvd, Jackson, GA 30233
- **Telephone:** 800.884.4484
- **Email:** sales@fabral.com
- **Website:** Fabral.com

### PRODUCT DESCRIPTION

<b>Acceptable Product:</b>	Fabral® Hefti-Rib®	
<b>Air Infiltration:</b>	ASTM E283	.00 cfm/ft <sup>2</sup> @ 20 psf
<b>Water Penetration:</b>	ASTM E331	No water leakage @ 20 psf
<b>Wind Uplift:</b>	UL580	Class 90, #244
<b>Class 4 Impact:</b>	UL2218	
<b>Class A Fire:</b>	UL790	

### GRAVITY LOAD TABLE (PSF)

Substrate	Span	4'-0"	5'-0"	6'-0"	7'-0"	8'-0"	9'-0"	10'-0"
26 ga. Steel	3	133	85	59	43	33	26	-
24 ga. Steel	3	147	94	65	48	37	29	24
22 ga. Steel	3	199	127	88	65	50	39	32
20 ga. Steel	3	254	163	113	83	64	50	41
18 ga. Steel	3	379	242	168	124	95	75	61
.032" alum.	3	113	73	50	37	-	-	-
.040" alum.	3	167	107	74	54	-	-	-
.050" alum.	3	234	150	104	76	-	-	-

Note: Allowable loads based on AISI and Aluminum Association Specifications. Allowable loads are based on stress only.

### DESIGN INFORMATION

- **Perforation available upon request**
- **Roof Slope:** Minimum required - 2:12
- **Purlin Spacing:** Maximum - 5' on-center
- **Panel Length:** Maximum - 65' Minimum - 4'
- **Factory Curving:** Minimum radius 10'

### PRODUCT INSTALLATION

Install panels plumb, level and straight so it is watertight and without waves or other distortions, allowing for thermal movement considerations. Apply sealant tape or caulking as necessary at flashing and panel joints to prevent water penetration.

### PRODUCT MAINTENANCE AND WARRANTY

Fabral® provides a 30 year paint-finish warranty for cracking, chipping, peeling, fading and chalking – providing confidence in a long-lasting application.

To ensure the durability of your Hefti-Rib® panels, use proper care. Remove filings, grease, stains, marks or excess sealants from roof panels system to prevent staining. Store panels and flashings in a safe, dry environment.

### RECENT PROJECTS

Segment	Project Name	Location	Quantity	Architect/Distributor
Government	Philadelphia Post Office	Philadelphia, PA		KlingStubbins
Healthcare	Center for Disease Control 110 Building	Atlanta, GA	95 sq	SPS Corp
Recreation	Geogria Aquarium	Atlanta, GA	381 sq	Architectural Product Specialist, Inc.
Industrial	Osceola Factory	Osceola, AR	951 sq	Yancey & Jamieson, Inc.
Education	Val Verde Middle School	Perris, CA	356 sq	Best Roofing & Waterproofing Inc.