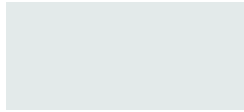
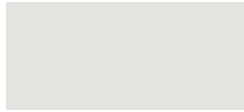


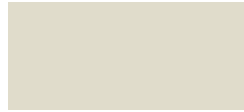
Core Colors



Regal White
SR: .68 IE: .86 SRI: 82



Bone White
SR: .72 IE: .84 SRI: 87



Almond
SR: .63 IE: .86 SRI: 75



Sandstone
SR: .54 IE: .86 SRI: 63



Surrey Beige
SR: .40 IE: .86 SRI: 43



Sierra Tan
SR: .35 IE: .86 SRI: 37



Medium Bronze
SR: .30 IE: .87 SRI: 31



Mansard Brown
SR: .29 IE: .86 SRI: 29



Dark Bronze
SR: .26 IE: .84 SRI: 24



Extra Dark Bronze
SR: .05 IE: .89 SRI: N/A



Patina Green
SR: .29 IE: .87 SRI: 29



Hemlock Green
SR: .28 IE: .87 SRI: 28



Classic Green
SR: .26 IE: .84 SRI: 24



Hartford Green*
SR: .10 IE: .82 SRI: 2



Teal^^
SR: .28 IE: .87 SRI: 28



Regal Blue*
SR: .28 IE: .86 SRI: 27



Slate Blue
SR: .26 IE: .85 SRI: 24



Terra Cotta
SR: .34 IE: .87 SRI: 36



Banner Red^^
SR: .42 IE: .84 SRI: 45



Colonial Red
SR: .34 IE: .86 SRI: 35



Brandywine*
SR: .26 IE: .85 SRI: 24



Dove Grey
SR: .49 IE: .87 SRI: 56



Slate Gray
SR: .37 IE: .86 SRI: 39

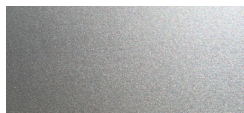


Charcoal
SR: .32 IE: .85 SRI: 32

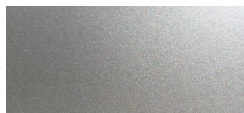


Matte Black
SR: .27 IE: .86 SRI: 26

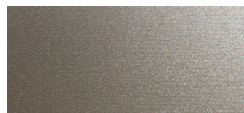
Mica Colors**



Bright Silver S66
SR: .60 IE: .77 SRI: 68



Silversmith S15
SR: .53 IE: .78 SRI: 59



Champagne S20^^
SR: .37 IE: .83 SRI: 38



Pewter S11
SR: .36 IE: .85 SRI: 38



Bright Copper S25^^
SR: .49 IE: .85 SRI: 55

SR = Solar Reflectivity IE = Initial Emissivity SRI = Solar Reflective Index

** Features a pearlescent mica finish; subject to premium pricing.

* Denotes Dark Colors

^^ Denotes Exotic Colors

Colors shown are as close to actual colors as allowed by the printing process. Actual metal samples are available. Colors may appear different when viewed at different angles and under different lighting conditions. Due to product improvements, changes and other factors, we reserve the right to change or delete information herein without prior notice.

ARCHITECTURAL PVDF				STEEL (GA)					ALUMINUM (in)		
FABRAL COLOR	SR	IE	SRI	24GA	24GA	24GA	22GA	18GA	.032	.040	.050
Standard Coil Width				48.250"	41.750"	44.375"	44.375"	44.375"	48.250"	48.250"	48.250"
Regal White	.68	.86	82	✓	✓	✓	✓	⊘	✓	⊘	⊘
Bone White	.72	.84	87	✓	⊘	⊘	⊘	⊘	✓	✓	⊘
Almond	.63	.86	75	✓	⊘	⊘	⊘	⊘	✓	✓	⊘
Sandstone	.54	.86	63	✓	⊘	✓	✓	⊘	✓	✓	⊘
Surrey Beige	.40	.86	43	✓	⊘	✓	✓	⊘	✓	✓	⊘
Sierra Tan	.35	.86	37	✓	⊘	⊘	⊘	⊘	✓	✓	⊘
Medium Bronze	.30	.87	31	✓	✓	✓	✓	⊘	✓	⊘	⊘
Mansard Brown	.29	.86	29	✓	⊘	⊘	⊘	⊘	✓	⊘	⊘
Dark Bronze	.26	.84	24	✓	✓	✓	✓	⊘	✓	✓	✓
Extra Dark Bronze	.05	.89	N/A	⊘	⊘	⊘	⊘	⊘	⊘	⊘	⊘
Patina Green	.29	.87	29	✓	⊘	⊘	⊘	⊘	⊘	⊘	⊘
Hemlock Green	.28	.87	28	⊘	⊘	⊘	⊘	⊘	⊘	⊘	⊘
Classic Green	.26	.84	24	✓	⊘	⊘	⊘	⊘	⊘	⊘	⊘
Hartford Green*	.10	.82	2	✓	⊘	⊘	⊘	⊘	⊘	⊘	⊘
Teal^^	.28	.87	28	⊘	⊘	⊘	⊘	⊘	⊘	⊘	⊘
Regal Blue*	.28	.86	27	✓	⊘	⊘	⊘	⊘	⊘	⊘	⊘
Slate Blue	.26	.85	24	✓	⊘	⊘	⊘	⊘	⊘	⊘	⊘
Terra Cotta	.34	.87	36	✓	⊘	⊘	⊘	⊘	⊘	⊘	⊘
Banner Red^^	.42	.84	45	✓	⊘	⊘	⊘	⊘	⊘	⊘	⊘
Colonial Red	.34	.86	35	✓	⊘	⊘	⊘	⊘	⊘	⊘	⊘
Brandywine*	.26	.85	24	⊘	⊘	⊘	⊘	⊘	⊘	⊘	⊘
Dove Grey	.49	.87	56	✓	⊘	⊘	⊘	⊘	✓	⊘	⊘
Slate Gray	.37	.86	39	✓	⊘	✓	⊘	⊘	✓	✓	⊘
Charcoal	.32	.85	32	✓	⊘	⊘	✓	⊘	✓	✓	⊘
Matte Black	.27	.86	26	✓	✓	⊘	✓	⊘	✓	✓	⊘
Bright Silver S66	.60	.77	68	✓	⊘	⊘	⊘	⊘	✓	⊘	⊘
Silversmith S15	.53	.78	59	✓	⊘	⊘	⊘	⊘	⊘	⊘	⊘
Champagne S20^^	.37	.83	38	⊘	⊘	⊘	⊘	⊘	⊘	⊘	⊘
Pewter S11	.36	.85	38	✓	⊘	⊘	⊘	⊘	⊘	⊘	⊘
Bright Copper S25^^	.49	.85	55	⊘	⊘	⊘	⊘	⊘	⊘	⊘	⊘

PAINT PERFORMANCE PROPERTIES	HOT-DIPPED GALVANIZED STEEL OR GALVALUME®	ALUMINUM
Accelerated Weathering ASTM D 4587 (Drew Cycle Weatherometer) ASTM G 23	Hours: 3,000 Total Chalk: Rating 8 Color: 5 Δ E Hunter units max Hours: 5,000 Total Chalk: Rating 8 Color: 5 Δ E Hunter units max	Hours: 3,000 Total Chalk: Rating 8 Color: 5 Δ E Hunter units max Hours: 5,000 Total Chalk: Rating 8 Color: 5 Δ E Hunter units max
Salt Spray ASTM B 117	Hours: 1,000 Total Scribe: Rating 7 1/16" (1.6mm) Field: Rating 10, no blisters	Hours: 3,000 Total Scribe: Rating 10, no creepage Field: Rating 10, no blisters
Humidity ASTM D 2247	Hours: 2,000 Total Rating: 10, No blisters	Hours: 3,000 Total Rating: 10, No blisters
Formability ASTM D 4145	0T-3T	0T-3T
ASTM D 522 (Elongation over 1/8" mandrel)	No cracking No loss of adhesion	No cracking No loss of adhesion
Pencil Hardness ASTM D 3363	HB-2H	HB-2H
Abrasion Resistance ASTM D 968	55-75 Liters of falling sand	55-75 Liters of falling sand
Specular Gloss ASTM D 523	20-35 at 60°	20-35 at 60°
Reverse Impact ASTM D 2794	2x Metal thickness in inch-lbs No loss of adhesion	1 1/2x Metal thickness in inch-lbs No loss of adhesion
Flame Test ASTM E 84	Class A-rated coating	Class A-rated coating

- ✓ Stocked Color
 - ⊘ Non-Stocked (Please Contact Fabral for Availability)
 - * Denotes Dark Colors
 - ^^ Denotes Exotic Colors
- NOTES ON AVAILABILITY:**
- For availability on products, colors, gauges and coil widths, please contact your Fabral Sales Representative.
 - Standard inventory is non-embossed. Please contact us for the availability of stucco embossing.
 - Protective, strippable film is available upon request.
 - Mica colors are subject to premium pricing. Due to the unique effect of the Mica finishes, appearances may vary from batch to batch.
 - 110Clear/Mill Finish, special paint systems and coating systems are available. Please contact your Fabral Sales Representative for details.
 - All colors are supplied in Medium Gloss (20-35 at 60°). Low Gloss available and subject to minimum coating run.
 - Subject to change without notice.
 - Fabral standard architectural colors and finishes feature 70% polyvinylidene fluoride (PVDF) resin paint systems to ensure long-term color retention and performance. Custom colors and finishes are also available. Minimum quantities and set-up charges may apply.

Due to product improvements, changes and other factors, we reserve the right to change or delete information herein without prior notice.