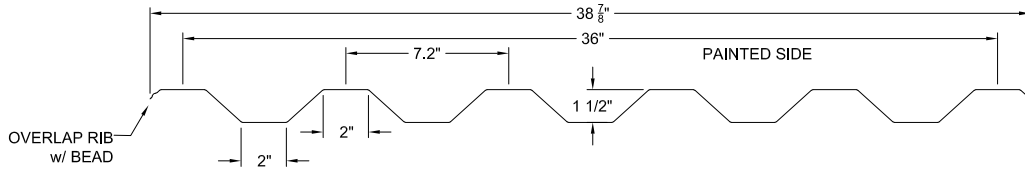
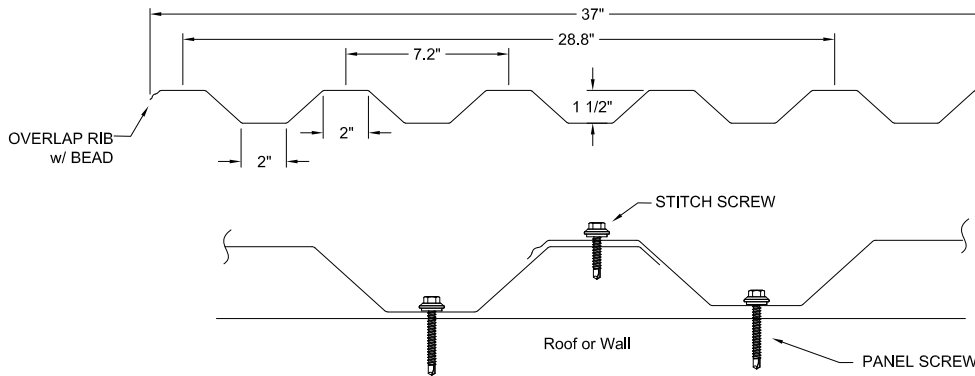


## Hefi Rib - 44 3/8" Coil Used for both roofs and walls

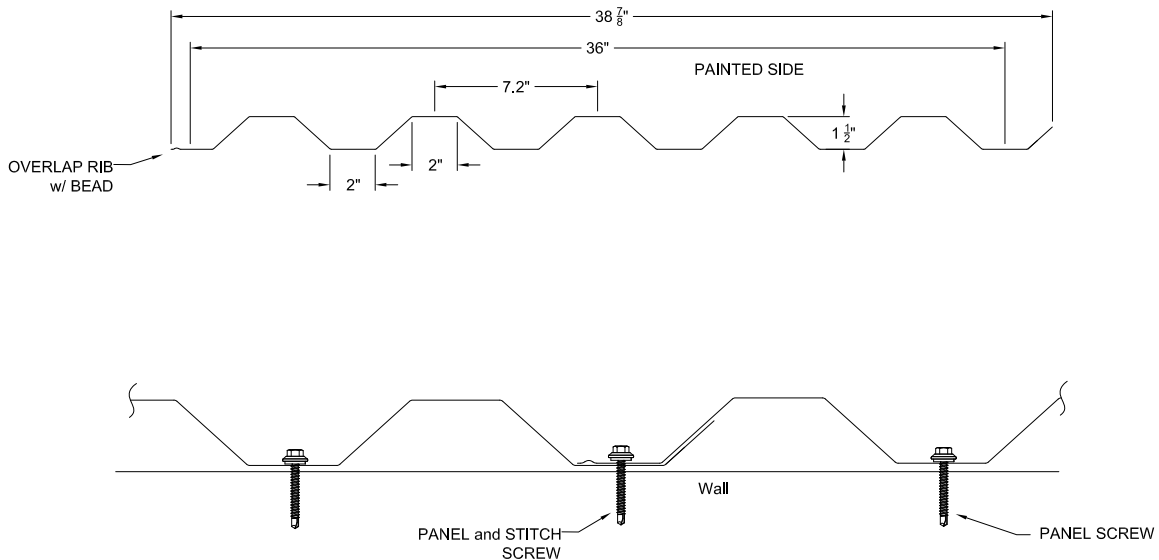


## Hefi Rib 288 - 43" Coil Used for both roofs and walls



Butyl sealant recommended for weathertightness

## HefiRib I (aka Inverted) - 44 3/8" Coil Used only on walls



Job Name: \_\_\_\_\_  
Date: \_\_\_\_\_  
Signature: \_\_\_\_\_

Panel option must be circled and signed prior to production

Panels shown above are the standard options with nominal dimensions as shown. Panel material (ie steel or aluminum) and paint type will limit available options. Contact Fabral for more information.