

LIGHTWEIGHT AND EASY TO INSTALL STANDING SEAM PANEL

The Ultra Loc® metal standing seam panel adds value to any project. This unique, high-performance panel is lightweight and easy to install, catering to replacement and new construction applications.

GALVALUME (AZ50) WARRANTY COVERAGE

FILM INTEGRITY	LIFETIME
CHALK & FADE	30 YEARS
PERFORATION	20 YEARS



SCAN FOR COLOR AVAILABILITY

RECOMMENDED PITCH:

3:12
AND ABOVE

GAUGE:

26

- 16" Coverage with 1" Seam Height
- UL 790 Class A Fire Resistance Rating
- UL 2218 Class 4 Hail Impact Resistance
- High Performance WeatherXL SMP Paint System
- Custom Cut to Lengths up to 40'*

* Profile configuration, color options, minimum and maximum lengths may vary by region.



SERVING THE INDUSTRY



LOCAL CUSTOMER SUPPORT



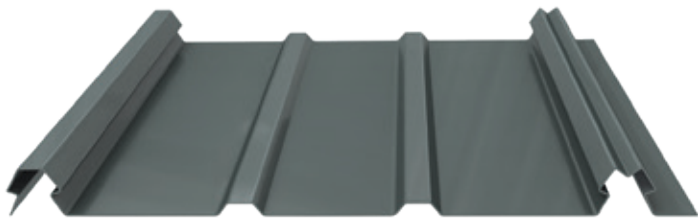
ENDURING WARRANTY



TOTAL SYSTEMS SOLUTION



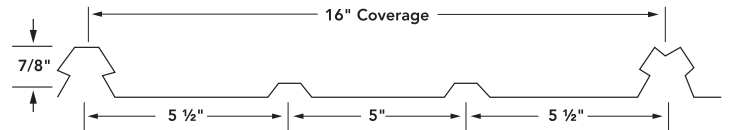
WEATHER RESISTANT



LIGHTWEIGHT AND EASY TO INSTALL STANDING SEAM PANEL

The Ultra Loc® metal standing seam panel adds value to any project. This unique, high-performance panel is lightweight and easy to install, catering to replacement and new construction applications.

PANEL SPECIFICATIONS



SCREWS	SOLID	PLYWOOD
#10 x 1" Sharp Point Wafer Head Square Drive	Decking & Weather Barrier	Screw Spacing 18" Center to Center
OSB or ZIP SYSTEM®	NOT RECOMMENDED	
Screw Spacing 9" Center to Center	Installing Over Purlins or Existing Shingles	

*Actual metal samples are available; request samples prior to installation.
Due to product improvements, changes and other factors, Fabral reserves the right to change or delete information here-in without prior notice.*



SERVING THE
INDUSTRY



LOCAL CUSTOMER
SUPPORT



ENDURING
WARRANTY



TOTAL SYSTEMS
SOLUTION



WEATHER
RESISTANT